

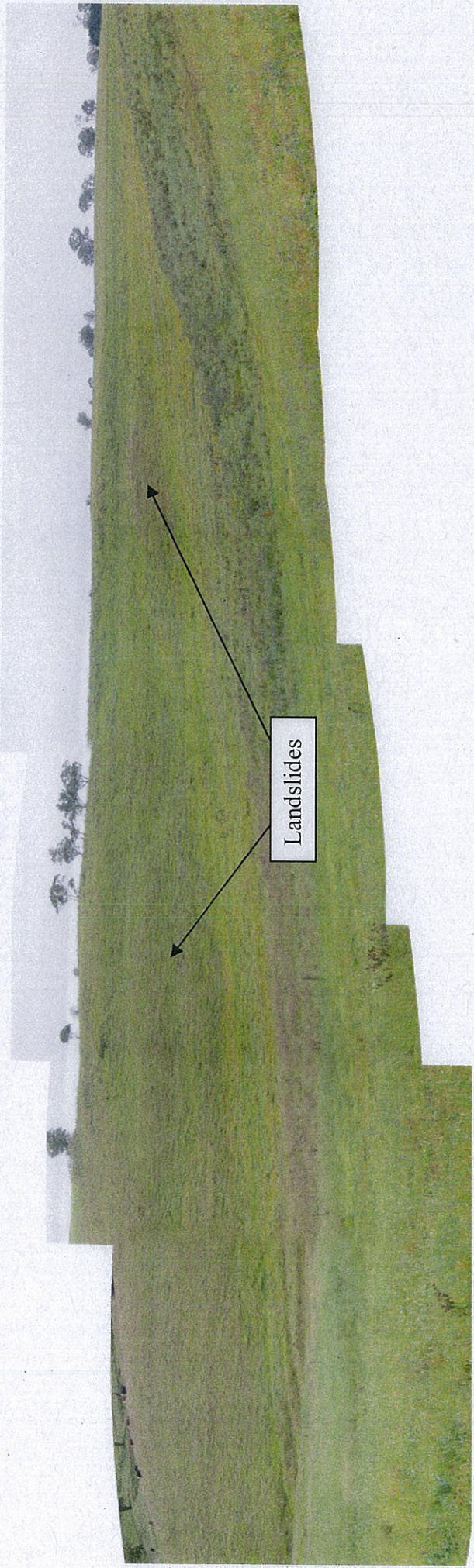
# Appendix B

**Site Walkover Photographs (6 pages)**

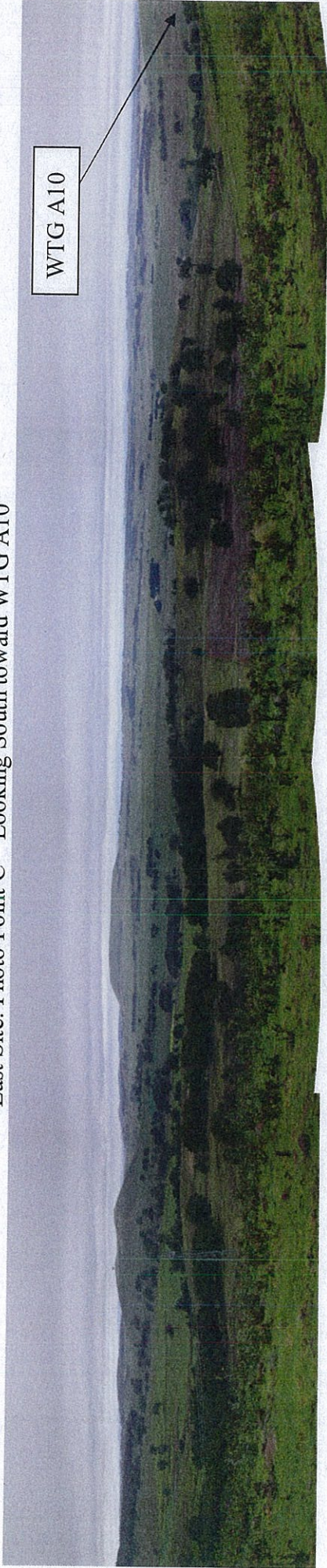
East Site: Photo Point A – looking South toward WTG A1



East Site: Photo Point B – Looking North towards ancient landslide



East Site: Photo Point C – Looking South toward WTG A10



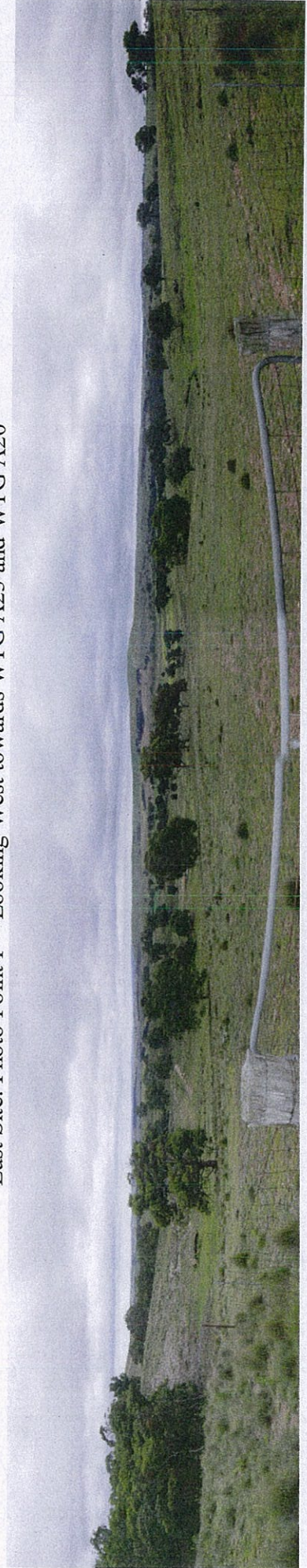
East Site: Photo Point D – Looking South – East from WTG A21



East Site: Photo Point E – Looking South from WTG A22 towards WTG A25



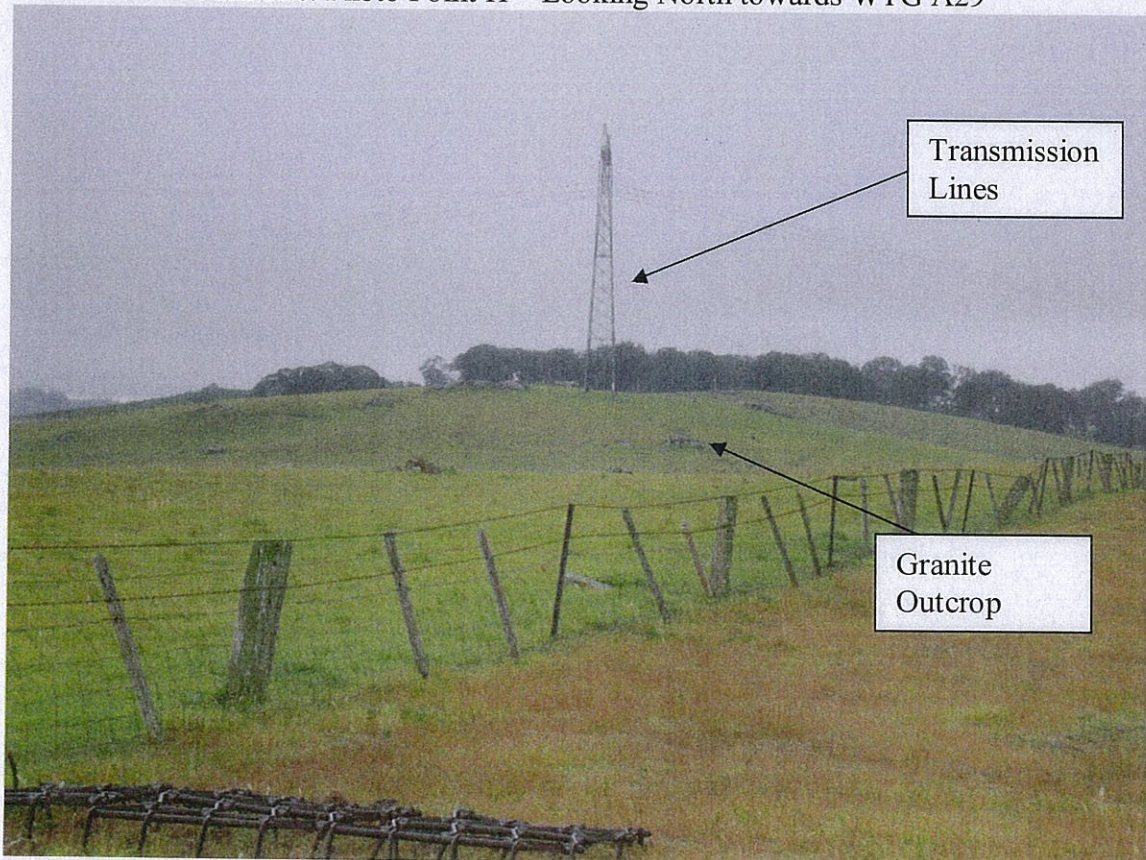
East Site: Photo Point F – Looking West towards WTG A23 and WTG A20



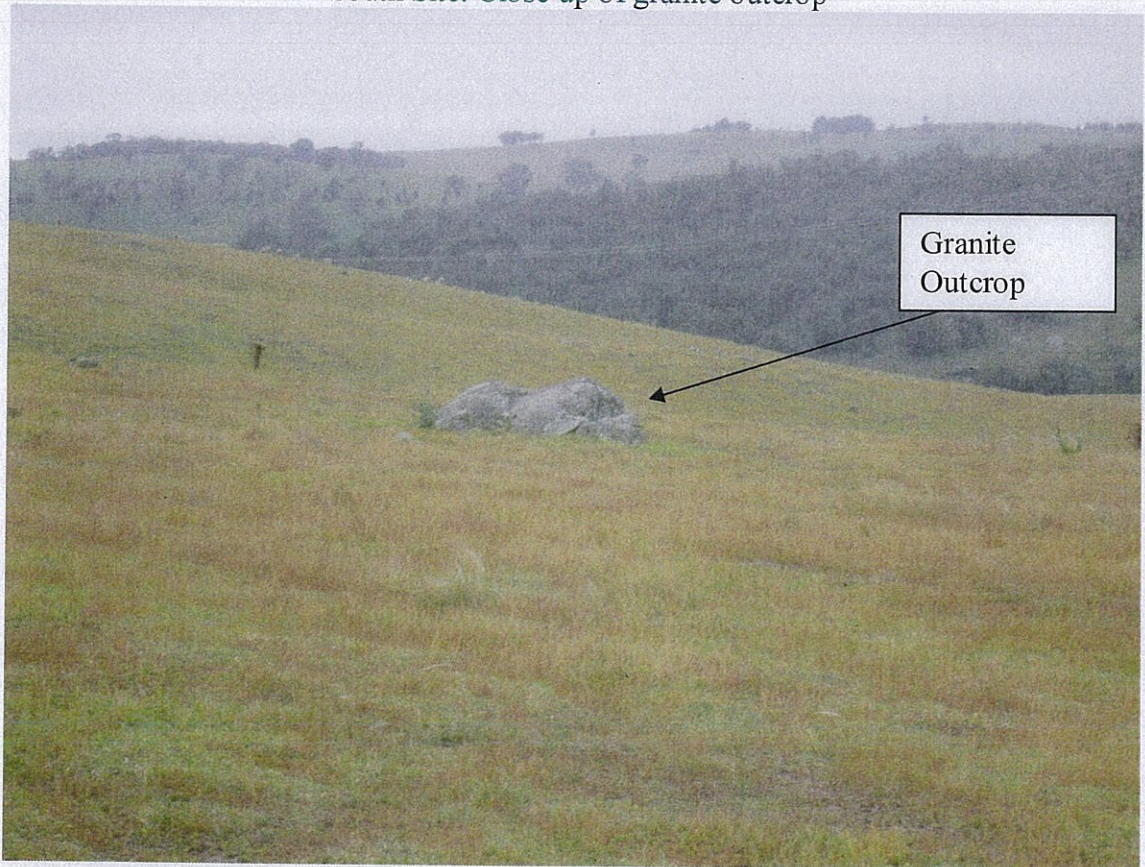
East Site: Photo Point G – Small shale quarry



South Site: Photo Point H – Looking North towards WTG A29



South Site: Close up of granite outcrop



South Site: Photo Point I – Looking East



South Site: Photo Point J – Looking North towards WTG A27



South Site: Photo Point J - Looking East along Transmission line

