

PROJECT NEWSLETTER – AUGUST 2016

Crookwell Development Pty Ltd (CDPL) is the proponent for the approved Crookwell 2 Wind Farm and proposed Crookwell 3 Wind Farm projects. Both projects are situated in the Southern Tablelands of New South Wales (NSW), and located within the Upper Lachlan Shire Council Local Government Area.

The approved 92MW Crookwell 2 Wind Farm project is a State Significant Development located ~14km south-east of the Crookwell Township and ~30km north-west of Goulburn, the project is accessed via Crookwell Road and Woodhouselee Road. The Crookwell 2 Wind Farm site is 2,088 ha of predominantly sheep and cattle grazing farms that have a good wind resource and access to the high voltage transmission line network via the approved national electricity grid substation located within the site boundary.

CDPL is proposing to modify the existing Development Consent for the approved Crookwell 2 Wind Farm, the proposed modifications to the project include:

- Reduction of the number of turbines from the 46 currently approved to 33 (a total reduction of 13 turbines);
- Increasing the maximum turbine envelope so as to accommodate the newer more efficient wind turbine technology now available in the market. The changes proposed to the wind turbine envelope will:
 - Increase in the hub height from 80m to up to 95m;
 - Increase in the blade size from 47m to up to 64m;
 - Increase in the rotor diameter from 96m to up to 130m;
 - Increase in the blade tip height from 128m to up to 160m; and
 - Increase in turbine foundation area from ~17m in diameter to ~20m;

- Inclusion of micrositing allowance;
- Changes to obstacle night lighting design to match the reduced turbine layout;
- Grid cut-in reconfiguration and inclusion of a taller replacement transmission line tower, and associated communications infrastructure; and
- Subdivision of the approved switchyard and any deemed subdivision arising from the grant of leases for the wind farm.

The Indicative Site Infrastructure and Turbine Layout Map for the combined Crookwell 2 and 3 Wind Farm projects is included in this newsletter.

The proposed modifications will enable the Crookwell 2 Wind Farm project to utilise the newer and larger capacity wind turbine technology currently available in the market whilst further reducing the overall environmental impacts of the project. The use of newer turbine models will allow the Crookwell 2 Wind Farm to generate more energy per wind turbine and to increase the overall energy yield of the amended ~108MW project. Due to advancement of wind turbine technology, the newer technology can generate up to 385 gigawatt hours per year (GWh/y) for the 33 larger wind turbines in comparison to only 270 GWh/y for the 46 approved wind turbines. The amended Crookwell 2 Wind Farm project can provide enough electricity to power up more than 59,000 average size households per year, this is equivalent to ~40% of Canberra's population.

As part of the process for this proposed modification, CDPL and its representatives and consultants, have carried out a comprehensive consultation process with various project stakeholders, including a door-knock consultation process during December 2015, and further community consultation early in 2016.

The proposed modification application will be placed on public exhibition by the NSW

Department of Planning and Environment once it has been finalised, and the community will have the opportunity to make submissions. The public exhibition details will be advertised prior to the event.

Economic Benefits of Crookwell 2 Wind Farm

The Capital Investment Value of the project is estimated to be ~\$200 Million, and is expected to provide around 80 direct jobs during construction and 14 ongoing operational jobs including the control centre for the life of the wind farm.

The construction and operation phases of the project will stimulate the economy in the Upper Lachlan Shire as well as ACT as a result of direct investment and job creation, and higher disposable income and expenditure in the region.

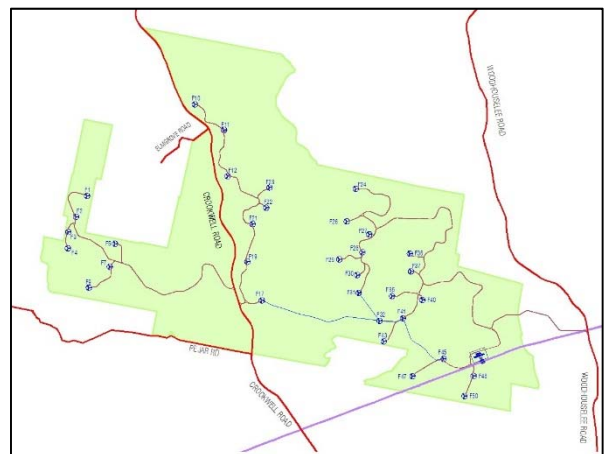
These economic benefits are enhanced by CDPL's commitment to contribute an annual contribution of \$2,500 (adjusted annually to changes in the CPI) per operating turbine to the Upper Lachlan Shire's Community Enhancement Fund to be spent on community projects in vicinity of the project area. This equates to an annual contribution of ~\$82,500 per annum to the direct benefit of community projects in the local area. In addition as part of our proposal for voluntary Neighbour Benefit Sharing Agreements a number of Neighbour Deeds have been signed by several of the immediate neighbours of the project site boundary. These project neighbours will receive a direct benefit when the project is constructed and starts its operation phase.

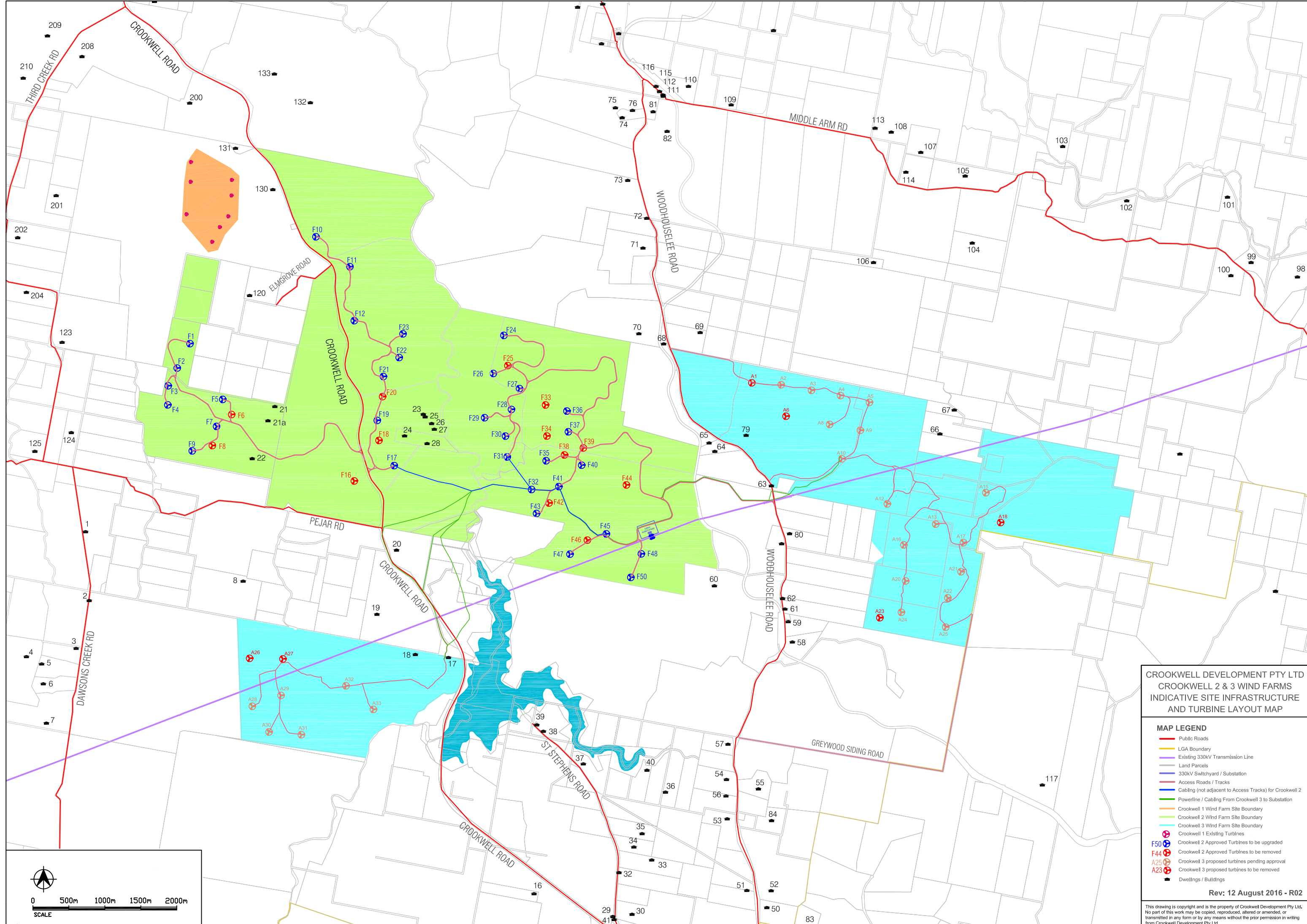
If you are interested in working on the wind farm projects then we recommend that you contact the New South Wales Government-supported Industry Capability Network (ICN). We are cooperating with the ICN to assist local providers to maximise the local economic benefit of major projects in the Crookwell district.

Contact Us

If you would like to know more about the Crookwell 2 and 3 Wind Farm projects, there are a number of ways for you to contact us at Union Fenosa Wind Australia Pty Ltd:

- You can speak with us by telephone on our freecall number **1800 457 181**
- You can email us at:
info@unionfenosa.com.au
- You can visit our website:
www.unionfenosa.com.au and use an online enquiry form to contact us.
- You can write to us via mail at:
Crookwell Development Pty Ltd
Suite 403, 68 York Street
Sydney NSW 2000
- The Crookwell 2 and 3 Wind Farm have an established Community Consultative Committee (CCC) that conducts meetings facilitated by an independent Chair appointed by the Department of Planning and Environment
- Our representatives can also be available for face-to-face meetings with community members during their regular site visits.

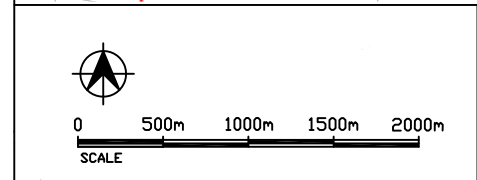




CROOKWELL DEVELOPMENT PTY LTD
CROOKWELL 2 & 3 WIND FARMS
INDICATIVE SITE INFRASTRUCTURE
AND TURBINE LAYOUT MAP

- MAP LEGEND**
- Public Roads
 - LGA Boundary
 - Existing 330kV Transmission Line
 - Land Parcels
 - 330kV Switchyard / Substation
 - Access Roads / Tracks
 - Cabling (not adjacent to Access Tracks) for Crookwell 2
 - Powerline / Cabling From Crookwell 3 to Substation
 - Crookwell 1 Wind Farm Site Boundary
 - Crookwell 2 Wind Farm Site Boundary
 - Crookwell 3 Wind Farm Site Boundary
 - ⊗ Crookwell 1 Existing Turbines
 - ⊗ Crookwell 2 Approved Turbines to be upgraded
 - ⊗ Crookwell 2 Approved Turbines to be removed
 - ⊗ Crookwell 3 proposed turbines pending approval
 - ⊗ Crookwell 3 proposed turbines to be removed
 - Dwellings / Buildings

Rev: 12 August 2016 - R02



This drawing is copyright and is the property of Crookwell Development Pty Ltd. No part of this work may be copied, reproduced, altered or amended, or transmitted in any form or by any means without the prior permission in writing from Crookwell Development Pty Ltd.