



## **LANDSCAPING MANAGEMENT PLAN**

### **1. OBJECTIVES**

This Management Plan aims to implement the appropriate on-site Landscaping plan for the Ryan Corner wind farm project site.

### **2. REQUIREMENTS**

This Landscaping Management Plan has been prepared in accordance with Condition 4 of Permit 20060222 for the Ryan Corner Wind Energy Facility.

#### ***Landscape / Visual Amenity***

4. *Before the development starts, on on-site landscape plan to the satisfaction of the Minister for Planning must be submitted to and approved by the Minister for Planning. When approved, the plan will be endorsed and will then form part of this permit. The plan must show:*
- a) landscaping to screen the substation, switchyard and associated buildings other than the turbines;*
  - b) details of the plant species proposed to be used in the landscaping, including height and spread at maturity;*
  - c) a timetable for implementation of all landscaping works; and*
  - d) a maintenance and monitoring program;*

### 3. MANAGEMENT PLAN

#### Landscaping to Screen Infrastructure

As per the Ryan Corner "*Landscape Plan for Substation and Switchyard*" prepared by ERM Pty Ltd on 19-Mar-2010, also shown in figure-1.



Figure-1

## Details of Plant Species

As per the Ryan Corner "Landscape Plan for Substation and Switchyard" prepared by ERM Pty Ltd on 19-Mar-2010, also shown in figure-2.

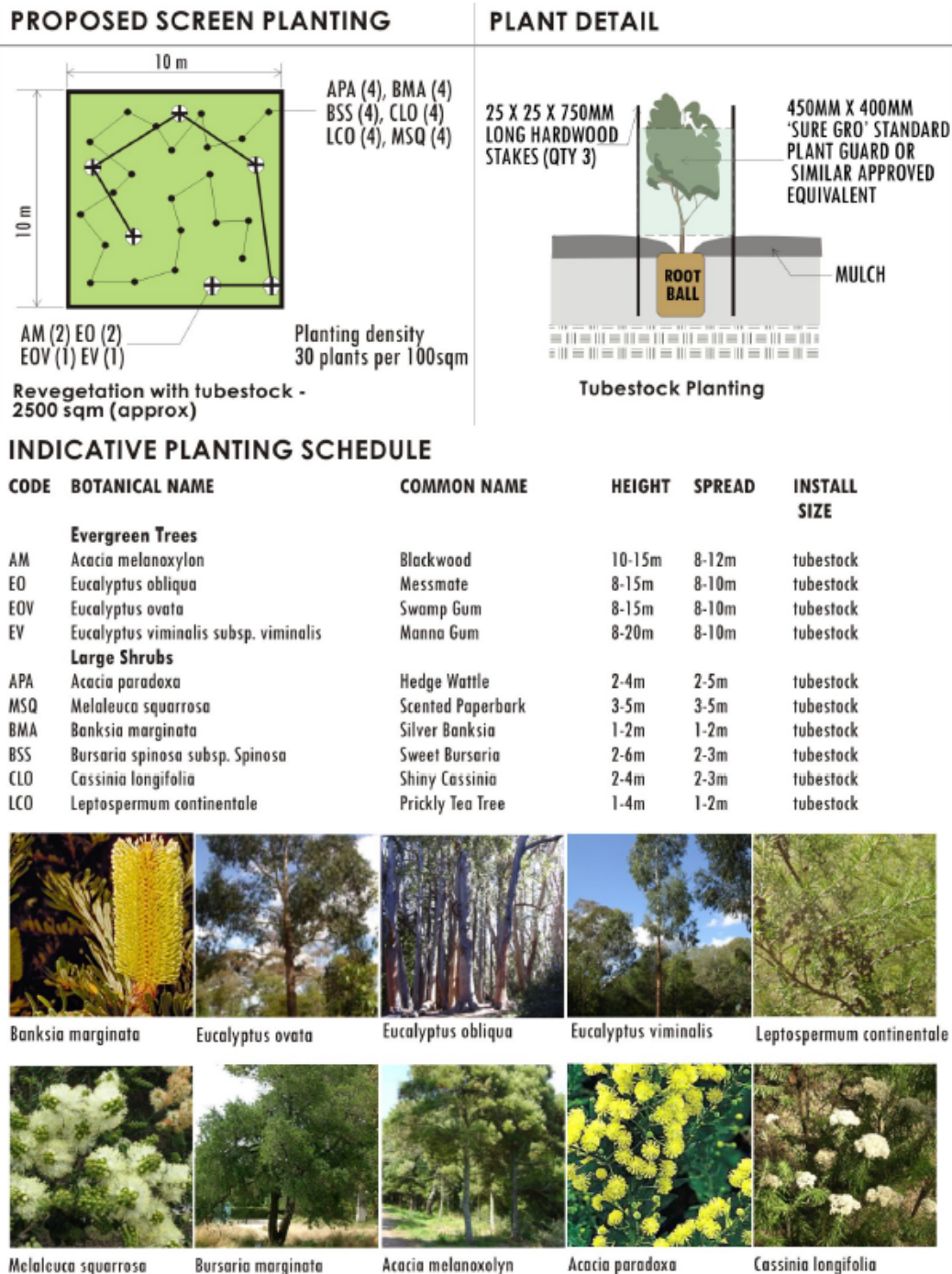


Figure-2



### **Timetable for Implementation**

All landscaping works will commence once the substation equipment have been delivered and installed and the security fencing has been installed. The substation commissioning is one of the last items in the construction phase as the High Voltage power transformers are usually the longest lead items. This late commencement of the landscaping is due to the disturbance that the craneage can cause during the delivery and installation of the large substation equipment.

It is estimated that the timetable for the implementation of the landscaping would be approximately 6 months, and can commence in the areas that have been commissioned or no further heavy installation works will be carried out that could disturb the vegetation.

### **Maintenance & Monitoring Program**

It is important to ensure that the planted vegetation as part of the landscaping program be maintained and monitored to allow the screening to develop to its desired height and spread and be as effective as it was designed for in this project.

We are proposing that the monitoring be on a quarterly basis for the first 12 months after completion of the landscaping implementation, and then the inspections be performed bi-annually for the years 2 to 5, and then annually thereafter.

The rehabilitation of the planted landscaping will be carried out with consultation with the relevant landowner and the Moyne council.

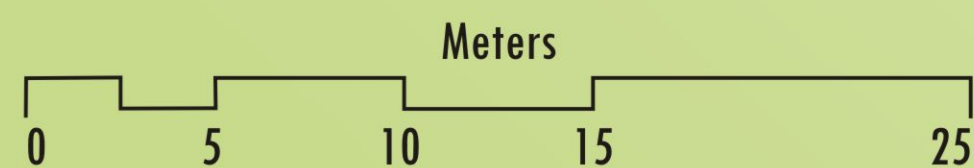
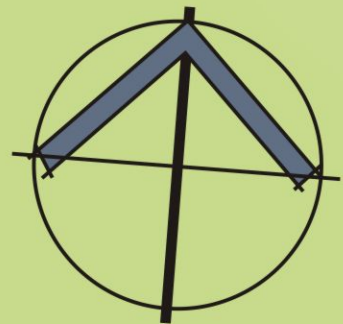
The inspections for this monitoring program must be carried out by a qualified and experienced person in this field, where he/she would produce a report with results of the inspection and recommendations for any remedial action(s).

Weed control measures are as per the Weed Management Plan in the Environmental Management Plan for the project.

### **Responsibilities**

The Site Manager is responsible for the implementation of the Landscaping Management Plan.

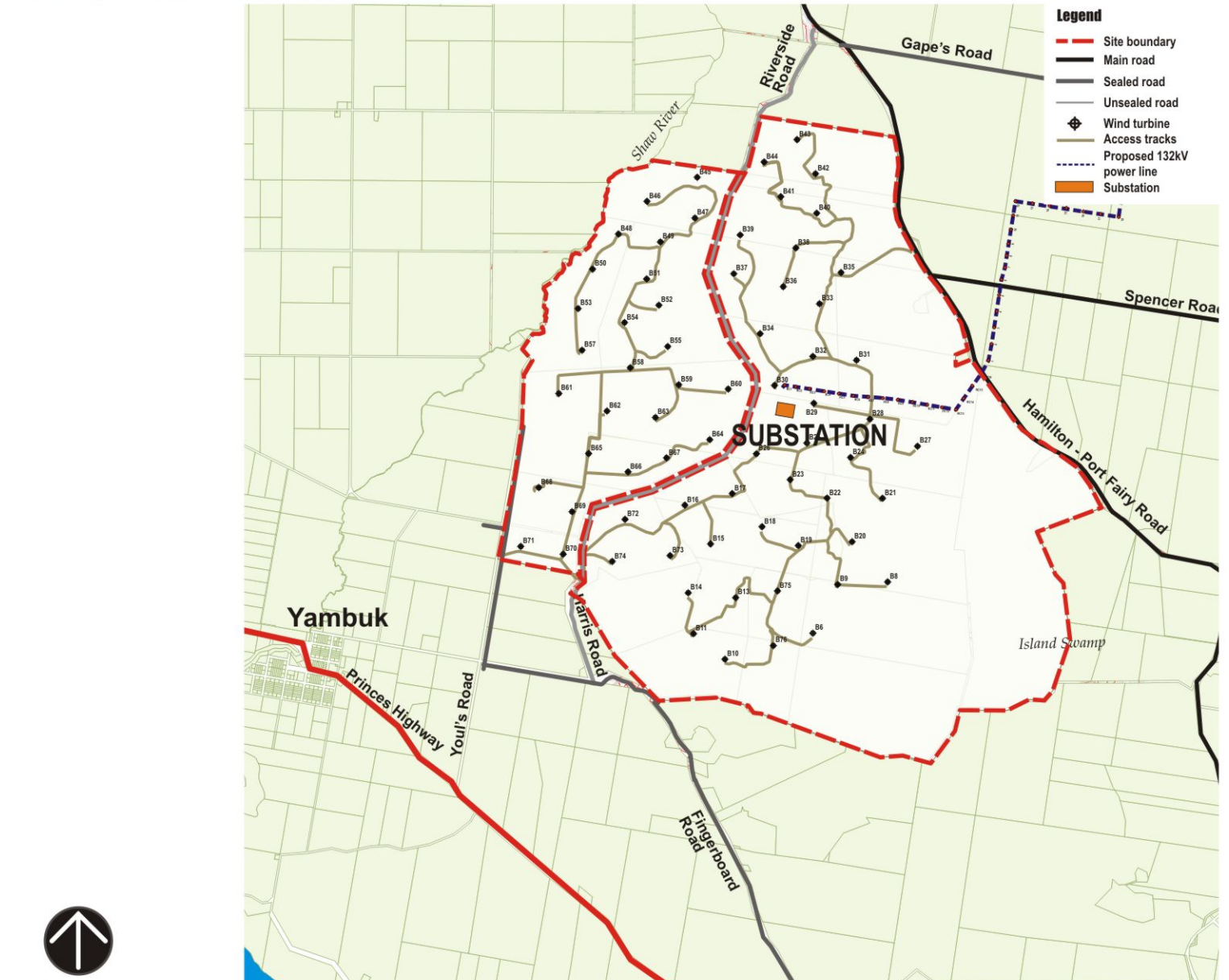




## LEGEND

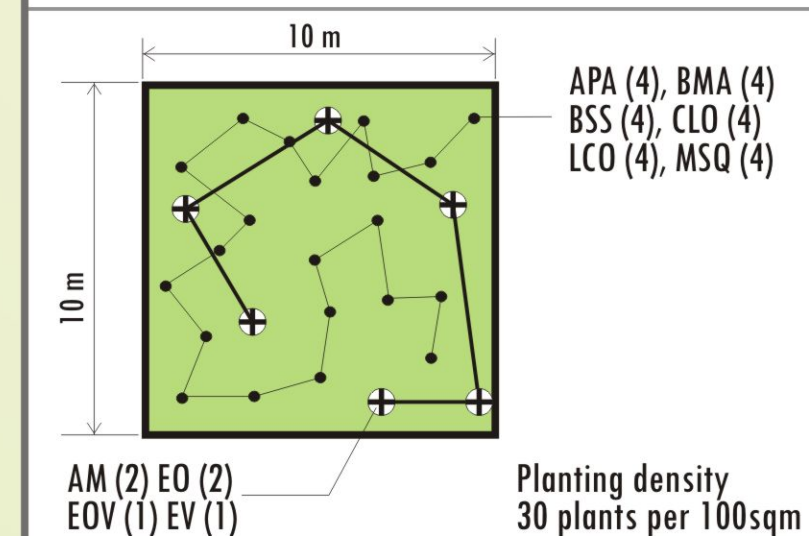


## WIND FARM LAYOUT

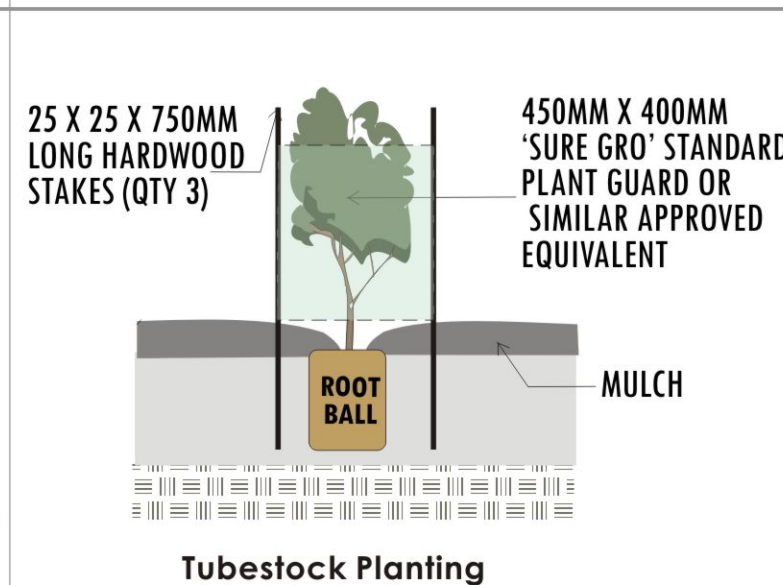


## RYAN CORNER WIND FARM SITE

### PROPOSED SCREEN PLANTING



## PLANT DETAIL



### INDICATIVE PLANTING SCHEDULE

CODE	BOTANICAL NAME	COMMON NAME	HEIGHT	SPREAD	INSTALL SIZE
<b>Evergreen Trees</b>					
AM	Acacia melanoxylon	Blackwood	10-15m	8-12m	tubestock
EO	Eucalyptus obliqua	Messmate	8-15m	8-10m	tubestock
EOV	Eucalyptus ovata	Swamp Gum	8-15m	8-10m	tubestock
EY	Eucalyptus viminalis subsp. viminalis	Manna Gum	8-20m	8-10m	tubestock
<b>Large Shrubs</b>					
APA	Acacia paradoxa	Hedge Wattle	2-4m	2-5m	tubestock
MSQ	Melaleuca squarrosa	Scented Paperbark	3-5m	3-5m	tubestock
BMA	Banksia marginata	Silver Banksia	1-2m	1-2m	tubestock
BSS	Bursaria spinosa subsp. Spinosa	Sweet Bursaria	2-6m	2-3m	tubestock
CLO	Cassinia longifolia	Shiny Cassinia	2-4m	2-3m	tubestock
LCO	Leptospermum continentale	Prickly Tea Tree	1-4m	1-2m	tubestock



## RYAN CORNER WIND FARM

Landscape Plan for Substation and Switchyard

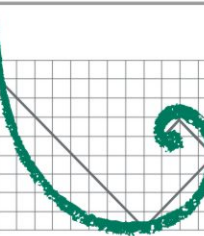
Project No:	0105123	Drawing No:	Is2
Date:	19/03/2010	Drawing size:	A1
Drawn by:	ML	Reviewed by:	AW

Landscape Architecture  
& Urban Design

Level 3, Yarra Tower  
World Trade Centre  
18-38 Siddeley Street  
Docklands Vic 3005

Telephone 61-3 9696 8011  
Facsimile 61-3 9696 8022  
melbourne@erm.com

ENVIRONMENTAL RESOURCES MANAGEMENT AUSTRALIA PTY LTD



ERM