



Paling Yards Wind Farm, Oberon Shire, New South Wales

Supplementary Cultural Heritage Report

For Union Fenosa Wind Australia Pty Ltd

13 November 2013

0131035_Final

www.erm.com

Paling Yards Wind Farm, Oberon Shire, New South Wales

Prepared by:	<i>Adam Coburn</i>
Position:	<i>Project Manager</i>
Signed:	
Date:	<i>13 November 2013</i>
Approved by:	<i>Steve Laister</i>
Position:	<i>Partner</i>
Signed:	
Date:	<i>13 November 2013</i>

Supplementary Cultural Heritage Report

Union Fenosa Wind Australia Pty Ltd

13 November 2013

0131035_Final

www.erm.com

This disclaimer, together with any limitations specified in the report, apply to use of this report. This report was prepared in accordance with the contracted scope of services for the specific purpose stated and subject to the applicable cost, time and other constraints. In preparing this report, ERM relied on: (a) client/third party information which was not verified by ERM except to the extent required by the scope of services, and ERM does not accept responsibility for omissions or inaccuracies in the client/third party information; and (b) information taken at or under the particular times and conditions specified, and ERM does not accept responsibility for any subsequent changes. This report has been prepared solely for use by, and is confidential to, the client and ERM accepts no responsibility for its use by other persons. This report is subject to copyright protection and the copyright owner reserves its rights. This report does not constitute legal advice.

Union Fenosa Wind Australia Pty Ltd

Paling Yards Wind Farm,
Oberon Shire, New South
Wales

*Supplementary Cultural
Heritage Report*

13 November 2013

Reference: 0131035_Final

**Environmental Resources Management
Australia**

Building C, 33 Saunders Street

Pymont, NSW 2009

Telephone +61 2 8584 8888

Facsimile +61 2 8584 8800

www.erm.com

CONTENTS

1	INTRODUCTION	
1.1	REPORT BACKGROUND	1
1.2	LIMITATIONS	2
2	SIGNIFICANCE ASSESSMENT	
2.1	BACKGROUND	3
2.2	SCIENTIFIC SIGNIFICANCE ASSESSMENT	4
2.2.1	METHODOLOGY	4
2.2.2	SCIENTIFIC SIGNIFICANCE ASSESSMENT: PALING YARDS WIND FARM	5
2.2.3	CONCLUSION OF SCIENTIFIC SIGNIFICANCE	7
2.3	ABORIGINAL CULTURAL SIGNIFICANCE ASSESSMENT	9
3	CONCLUSION	
4	REFERENCES	
ANNEX A	LOCATION OF ARCHEOLOGICAL AND HISTORIC CULTURAL HERITAGE SITES	
ANNEX B	NEWSPAPER ADVERTISEMENT SEEKING INTERESTED ABORIGINAL STAKEHOLDERS	
ANNEX C	LETTER CORRESPONDENCE SEEKING INTERESTED ABORIGINAL STAKEHOLDERS	
ANNEX D	LETTER CORRESPONDENCE SEEKING INTEREST FROM NOMINATED STAKEHOLDERS TO BE REGISTERED AS PART OF THE ABORIGINAL CONSULTATION FOR THE PROJECT	
ANNEX E	LETTER CORRESPONDENCE PROVIDING ASSESSMENT METHODOLOGY TO REGISTERED ABORIGINAL STAKEHOLDERS	

INTRODUCTION

Environmental Resources Management Australia Pty Ltd (ERM) has prepared this supplementary cultural heritage report, with a specific focus to carry out an assessment of the significance of heritage objects, referred to in the Anderson Consulting Report, for the Paling Yards wind farm (the Project). The need for further information regarding the significance of heritage objects was raised in the Test of Adequacy response provided by the Office of Environment and Heritage's (OEH) Adequacy Review, dated 24 June 2013, referring to report number MP 10_0053: *Anderson Environmental Consultants Pty Ltd June 2013 Indigenous and Non-Indigenous Archaeological Heritage for Proposed Paling Yards Wind Farm*. This supplementary report therefore responds directly to the OEH letter dated 14 June 2013.

The assessment has been undertaken by Dr Alister Bowen, with support from Adam Coburn, Principal Environmental Planner. Alister has over 14 years' experience in historical and pre-historical Australian archaeology and Adam 15 has years' experience in major development assessment.

1.1

REPORT BACKGROUND

In part, the OEH (2013) Test of Adequacy Review letter states:

"It remains unclear whether Appendix 12 discusses archaeological or cultural significance in relation to recorded sites. This issue was raised in the first adequacy review but there appears to be no change to this section of the report.

It is recommended that the discussion of significance in Section (5) be rewritten so it is clear which aspect of significance is being referred to and thereby enable an assessment and of whether the relevant requirements in relation to significance have been complied with".

This supplementary report addresses the comments raised by the OEH during the Test of Adequacy review phase for the initial Environmental Assessment Report for the Project.

The Director General Requirements (DGR) require the cultural heritage assessment to be undertaken in accordance with the *Interim Community Consultation Requirements for Applicants* (DEC 2004). During the course of the Project, the *Guidelines for Aboriginal Cultural Heritage Assessment and Community Consultation* (DEC 2005) were released. These were followed by the *Aboriginal cultural heritage consultation requirements for proponents 2010* (OEH 2010). The fieldwork and assessment components of the Project have incorporated requirements of the *Aboriginal cultural heritage consultation requirements for proponents 2010* (OEH 2010).

ERM's review has also confirmed that the project has been conducted in accordance with the OEH 2010 *Guide to investigating, assessing and reporting on Aboriginal cultural heritage in NSW*.

1.2

LIMITATIONS

This report has been prepared as a supplementary cultural heritage report to the existing Anderson report, dated June 2013, and additional Aboriginal consultation conducted in August 2013 by Anderson Environmental Consultants Pty Ltd.

In undertaking this supplementary report, ERM have not undertaken any additional field work, nor had any direct consultation with Aboriginal parties.

2.1

BACKGROUND

Aboriginal heritage sites, objects and places hold value for communities in many different ways. A major concern of cultural heritage management is the assessment of significance for sites. The aim of this report is to identify the archaeological/scientific and cultural/social values of sites identified during the Paling Yards study area field survey and assess their significance.

Archaeological or Scientific Significance

Archaeological (or scientific) significance refers to the potential of a site to contribute to current research questions. High significance is usually attributed to sites which are so rare or unique that the loss of the site would affect the ability to understand an aspect of past Aboriginal use/occupation of an area. In some cases a once common site type may be considered highly significant because it has become rare due to the ongoing destruction of the archaeological record through development. Moderate (medium) archaeological significance is attributed to sites which provide information on an established research question. Low significance is attributed to sites which cannot contribute new information about past Aboriginal use/occupation on an area. A low significance rating may have been attributed to a site due to site disturbance, distribution or the common nature of a site's contents.

Within the Paling Yards study area, only stone artefact sites were located and therefore the archaeological significance assessment deals only with this class of site. The archaeological significance of sites identified within the Paling Yards study area has been assessed using criteria suitable to evaluate stone artefact sites as per the requirements of the NPWS 1999: 92 (see Section 1.2 'Background: Scientific Significance Assessment' below).

Cultural/Social Significance

Cultural/social significance concerns the value of a place, feature or site to a particular community group, in this case the local Aboriginal communities. The primary guide to management of heritage places is the Australia ICOMOS Burra Charter 1999. The Burra Charter defines cultural significance as follows:

- cultural significance means aesthetic, historic, scientific, social or spiritual value for past, present or future generations;
- cultural significance is embodied in the place itself, its fabric, setting, use, associations, meanings, records, related places and related objects; and
- places may have a range of values for different individuals or groups.

Aspects of cultural or social significance are relevant to sites, objects and landscapes that are important or have become important to local Aboriginal communities. This importance involves both traditional links with specific areas as well as an overall concern by Aboriginal people for sites and their continued protection. Aboriginal communities have provided input into the archaeological survey methodology and the archaeological and cultural significance assessment of the Paling Yards study area. They have also been provided the opportunity to comment on the cultural and social significance assessment of the Paling Yards study area and the sites recorded within it (see Section 2.3 for details concerning the Aboriginal community consultation process).

2.2 SCIENTIFIC SIGNIFICANCE ASSESSMENT

2.2.1 Methodology

This assessment has sought to identify Aboriginal heritage objects and sites within the study area and obtain sufficient information to allow the values of those objects and sites to be determined. NPWS (1999: 93) states that *'while various criteria for archaeological significance assessment have been advanced over the years, most of them fall under the heading of archaeological research potential'*. As such, the seven key criteria have been used to examine the scientific significance of a site. These are:

- **rarity:** whether any or all aspects of a site (type, location, integrity, content and archaeological potential) can be considered common or rare within a local, regional or national context;
- **representativeness:** the comparative rarity of the site when considered and contrasted against other similar sites conserved at the local and/or regional level;
- **archaeological landscapes:** the study of the cultural sites relating to Aboriginal peoples within the context of their interactions in the wider social and natural environment they inhabited. Landscapes can be large or small depending upon specific contexts (i.e. local or regional conditions); they may also may be influenced by Aboriginal social and demographic factors (which may no longer be apparent);
- **connectedness:** whether a site can be connected to other sites at the local or regional level through aspects such as type, chronology, content (i.e. materials present, manufacturing processes), spatial patterning or ethno-historical information;
- **integrity & condition:** integrity refers to the level of modification a site has been subject to (the cultural and natural formation process) and whether the site could yield intact archaeological deposits, which could be spatially meaningful. Condition takes into account the state of the material, which is especially relevant for organic materials;

- **complexity:** the demonstrated or potential ability of a site to yield a complex assemblage (stone, bone and/or shell) and/or features (hearths, fire pits, activity areas); and
- **archaeological sensitivity:** the potential to yield information (from sub-surface materials which retain integrity, stratigraphical or not) that will contribute to an understanding of contemporary archaeological interest, or which could be saved for future research potential.

2.2.2 *Scientific Significance Assessment: Paling Yards Wind Farm*

A scientific significance assessment of cultural heritage sites within the Paling Yards Wind Farm study area against the seven key criteria outlined in Section 2.2.1 is described below. The location of previously identified cultural heritage sites and those identified during the survey undertaken by Anderson (2013) is provided in the figure in *Annex A*.

Rarity

The stone artefact sites occurring in the Paling Yards Wind Farm study area are all common site types within the region. Stone artefact scatters are the most common regional sites types, and this is reflected in the results of the field survey undertaken for this project. For this reason, the artefacts identified during the field survey are not considered rare in the local or regional context.

Representativeness

The stone artefact sites within the Paling Yards study area may be considered as representative of the types of sites, behaviours and patterning that are expected locally and regionally. None of the located sites, artefact types or artefact materials is of an exceptionally rare or high standard in terms of condition or content and they are not considered to represent an important or relatively unknown component of Australian Aboriginal culture.

Archaeological Landscapes

Archaeological landscapes are recorded when a range of different site types are located within a spatially discrete landscape unit. Elements within an archaeological landscape may be recorded separately (i.e., as individual artefact scatters, scarred trees, grinding grooves, rock art, etc.). However, it is often advantageous to record several items in an archaeological landscape as it ensures that the context for individual landscape elements are acknowledged and retained. Archaeological landscapes become highly significant when they can contribute to an understanding of spatial patterning and behaviours within and between sites.

Archaeological landscapes were identified within the Paling Yards study area. Low rises and elevated slightly sloping areas near a water source would have been attractive camping locations and were identified during the Paling Yards fieldwork as containing archaeological sites (i.e., Site P4 and Site P5). Sites P6, P7 and P8 are each located at the head section of gullies and have been individually identified as having moderate potential for containing intact sub-surface archaeological deposits. However, no significance assessment of potential sub-surface artefacts, if any exist, can be made until after sub-surface investigations have been conducted. Notwithstanding this, with the exception of P8, all of the Sites (P1-P7) are located at least 500m from proposed turbine locations, with P8 being located in between two proposed turbines (T31 and T32), although maintaining a separation of no less than 200m.

These landscape units (low rises and elevated slightly sloping areas near water sources, and the heads of gullies) within the Paling Yards study area are considered to be archaeologically, scientifically and culturally significant. Therefore, the study area holds significance as it contains landforms that display evidence of a distinctive way of life, tradition, land use, custom, and process or function that is no longer practised. Due mainly to the site types' commonness within the regions landscape and the currently unknown contents of the study areas sub-surface layers, the archaeological landscapes within the study area have been assessed as having moderate archaeological/scientific significance.

Connectedness

None of the sites recorded within the Paling Yards study area have known associations or connections with particular people or places. The stone artefact materials are common and locally available, there are no ethno-historical accounts relating to any of the newly identified sites and there is no obvious link between these sites and others that are known regionally or locally. The Sites are therefore not significant with regards to connectedness.

Integrity & Condition

Sites within the Paling Yards study area were all located on exposures resulting from ground disturbance of some kind. Levels of disturbance at the identified stone artefact scatter Sites vary, ranging from low (as at Sites P4, P5, P6, P7 and P8) to moderate (at Sites P1, P2 and P3). Whilst the level of disturbance varies from low to moderate across the sites, overall the sites are not significant in respect to integrity and condition.

Complexity

The stone artefact scatter recorded at Site P8 (containing 55 artefacts) and Site P6 (containing 35 artefacts) has a relative density of artefacts. However, both sites are represented entirely by cores and flakes and therefore do not represent a complex assemblage. Site P7 contains one backed stone artefact and Site P5 holds a potential grinding stone, but artefact densities were very low. None of the sites or landscapes within the Paling Yards study area has demonstrated a complex assemblage. Test excavations across some of the moderately sensitive landscapes (Sites P7 and P8 for example) would allow a clearer indication of the potential for complex sites within the Paling Yards study area. Although test excavations may be required depending on micro-sitting of turbines, the limited density and scatter of artefacts does not demonstrate a complex assemblage.

Archaeological Sensitivity

Two areas within the Paling Yards study area (Sites P7 and P8) have been identified as having moderate potential for containing intact sub-surface archaeological deposits. Both of these archaeologically sensitive areas are close to a water source and are associated with surface level stone artefacts. It is highly likely that the Abercrombie River and other smaller water courses within the Paling Yards study area would have acted as primary resource zones for Aboriginal people. In addition, low rises and elevated flat areas near these water sources (within 500 metres) would have been attractive camping locations. Such landscape zones within the Paling Yards study area were identified during the fieldwork stages for this project and are considered to be archaeologically, scientifically and culturally significant.

Notwithstanding the relative significance (low to moderate level) of Sites P7 and P8, only P7 represents any real risk in respect to the impacts associated with the placement of turbines. P7 is located at least 500m from any turbine and away from any associated wind farm infrastructure. Careful micro siting of turbines in the vicinity of site P8 will be required, otherwise further sub-surface investigations may be warranted, which we recommend occur as part of a Construction Heritage Management Plan.

2.2.3

Conclusion of Scientific Significance

The Paling Yards study area contains 22 recorded Aboriginal sites (14 recorded in 2005 by Heritage Concepts [all sites are either open campsites or areas of Potential Archaeological Deposits] and eight recorded during this current study in the Anderson Report). In accordance with the legislative guidelines (OEH 2010 and NPWS 1999), the eight sites recorded during this study have been assigned scientific significance in terms of rarity, representativeness, archaeological landscape, connectedness, integrity and condition, complexity, and archaeological sensitivity.

Table 2.1 provides an overview of the archaeological sensitivity and a scientific and aboriginal cultural significance assessment of the landscapes within the Paling Yards study area and the associated eight identified archaeological sites (P1-P8).

Table 2.1 *Summary of Significance Assessment*

Landscape units & Sites	Archaeological Sensitivity	Scientific significance	Aboriginal cultural significance
Head of gullies	Moderate	Moderate	Moderate
Low rises (near water)	Moderate	Moderate	Moderate
Slight slope areas (near water)	Moderate	Moderate	Moderate
Site P1	Moderate	Low	High
Site P2	Moderate	Low	High
Site P3	Low	Low	High
Site P4	Low	Low	High
Site P5	Low/Moderate	Moderate	High
Site P6	Low/Moderate	Moderate	High
Site P7	Low/Moderate	Moderate	High
Site P8	Moderate	Moderate	High

Of the 14 sites recorded in the Heritage Concepts, 2005 Report, A7, A10 and A11 contain a moderate archaeological sensitivity and scientific significance, whilst also having a high Aboriginal cultural significance. Direct impact upon these three sites can be avoided through micro-siting and through effective construction management as part of a Cultural Heritage Management Plan, which forms part of the Statement of Commitments.

The significance rating of the identified stone artefact scatters is higher or lower based on the presence of particular stone artefact types, formal tool types, diverse or unusual raw stone materials or the potential for stratified sub-surface deposits to exist. All sites identified within the study area are common site types at a local and regional level. Stone artefact scatters are the only site type represented in the region and those located within the Paling Yards study area have not demonstrated a significantly greater diversity or complexity in comparison to other known sites within the region. It is for this reason that four of the artefact scatters within the Paling Yards study area (Sites P1, P2, P3 and P4) have been assessed as having low archaeological significance. The remaining four sites (Sites P5, P6, P7 and P8) have been allocated a moderate archaeological significance rating (see Table 2.1) based on the larger number of artefacts present and the sites' potential to reveal *in situ* sub-surface deposits.

In terms of actual impacts posed by the wind farm development, only site P8 poses any real risks associated with turbine placements and construction, associated with the current Anderson Report. Sub-surface investigation may be warranted associated with any turbines proposed within 100m of site P8, which could occur post development consent. Micro-siting of turbines to avoid high risk locations, with a minimum distance of 100m is considered the most desirable option to avoid potential impacts.

Portions of the Paling Yards study area are within close proximity to the Abercrombie River (an area of known Aboriginal occupation) and therefore have cultural significance to local Aboriginal groups. These areas incorporate prominent landscape types within the study area (i.e., head of gullies, low rises and slightly sloping areas near a water source) similar to those where Aboriginal cultural heritage sites (see Table 2.1) have already been recorded (i.e., Sites P7 and P8). Such areas are likely to contain as yet unrecorded Aboriginal sites.

2.3

ABORIGINAL CULTURAL SIGNIFICANCE ASSESSMENT

Landscapes or locations within a landscape may hold special significance to Aboriginal communities as places where traditional lifestyles have occurred and where sacred or symbolic significance places exist. As such, Aboriginal cultural significance can only be determined by the Aboriginal community. The consultation guidelines used for this assessment (as identified above) set out a process for identifying and registering Aboriginal parties who wish to be consulted on the proposed development. These processes have been followed and consultation with the Pejar Local Aboriginal Land Council has been maintained throughout the project.

In accordance with the consultation guidelines, Aboriginal representatives, stakeholder groups or individuals who hold information concerning the significance of Aboriginal cultural heritage and wished to be consulted about the project were identified and consulted about the study area's cultural significance.

In late 2010 the proponent placed Newspaper advertisements in the Goulburn Post, the Crookwell Gazette and the Oberon Gazette for two consecutive weeks. The notice included proponent details, explained the project, gave its exact location, requested expressions of interest from Aboriginal people who may hold cultural knowledge relevant to determining the significance of Aboriginal objects and or places in the study, and invited such people to register an interest in participating in the project (see Appendix B [as shown on page 22 of the 2013 Revised Anderson report]).

The relevant Local Government Area is Oberon Shire. Initially the Upper Lachlan Shire Council was also consulted for consideration of a potential powerline through their area and hence both councils were approached as part of the consultation framework for the whole project assessment. Consultation with Oberon Shire Council has been ongoing since July 2009, including general correspondence in May 2012 in regard to community / stakeholder engagement and consultation committees. Consultation with Upper Lachlan Shire Council was undertaken from November 2010 to August 2011, through the community consultation process, at which time the powerline option through Upper Lachlan Shire was removed from the project, and hence no further consultation was deemed relevant with that council.

The proponent also wrote to the following organisations, government agencies and state bodies, between May 10 and May 20, 2013, to request the names and contact details of Aboriginal people who may have an interest in the study area (see Appendix C showing sample letter):

- Pejar Local Aboriginal Land Council;
- Gundungurra Tribal Corporation;
- Native Title Services;
- Registrar of Aboriginal Owners;
- Office of the Registrar Aboriginal Land Rights Act 1983; and
- The Office of Environment and Heritage (OEH) (north west region, Dubbo).

On May 16 2013, following advice from the above organisations, letters describing the Paling Yards wind farm project and inviting groups or individuals wishing to express an interest and be consulted about the project (see Appendix D) were sent to:

- Bill Allen (Muri Clan Group of the Wiradyri People);
- Chairperson (Dhuuluu Yala Aboriginal Corporation);
- Chairperson (Gundungurra Aboriginal Heritage Association Corporation);
- Sharon Brown (Gundungurra Tribal Council Aboriginal Corporation);
- Ms Syme (North-Eastern Wiradjuri);
- Helen Riley (Mingaan Aboriginal Corporation);
- Luke Burges (Pejar Local Aboriginal Land Council);
- Neville Williams (Mooka Traditional Owners Council);

- Trevor Robinson (Wiradjuri Interim Working Party);
- Wendy Lewis (Warrabinga Native Title Claimants Aboriginal Corporation)
- Robert Clegg (Waradjuri Council of Elders); and
- Chairperson (Wiradjuri Traditional Owners).

In response to the Newspaper advertisements in 2010 and expression of interest (EOI) in community participation and consultation letters in 2010 and 2013, registrations of interest were received from three Aboriginal Parties. These parties were:

- Luke Burges (Pejar Local Aboriginal Land Council);
- Lance Syme (Warrabinga Native Title Claimants Aboriginal Corporation); and
- Bill Allen (Muri Clan Group of the Wiradyri People).

The registered stakeholders were provided with written information regarding the scope of the proposed project and the methodology for the proposed cultural heritage assessment process (the draft archaeological research methodology), and also result and recommendations of the draft report, see Appendix E for written correspondence. Mr Luke Burges of the Pejar Local Aboriginal Land Council replied to the request to participate in the project and provide feedback on the proposed methodology.

During the fieldwork component of this study and in accordance with the relevant Aboriginal consultation guidelines, Aboriginal representative, Mr Burges was asked about the cultural significance (to individuals and the community more broadly) of the Paling Yards study area, specific locations within the study area and the study areas identified sites. Mr Burges indicated that the study area holds a high level of cultural significance to Aboriginal people as it is situated within areas that were used for hunting, gathering and camping by past Aboriginal groups and therefore represents Aboriginal occupation of the region, a past way of life and a direct link to their ancestors. Mr Burges also indicated that the wider landscape, particularly the flora, fauna and water courses associated with the study area are significant to them and other past and present Aboriginal people as they formed part of an economic resource environment.

The identification of archaeological and Aboriginal cultural heritage items associated with the Paling Yards study area was achieved during the heritage assessment through desktop research, field reconnaissance and consultation with Aboriginal stakeholders. In accordance with the DGRs for this project, the assessments have been developed in consultation with Aboriginal people who hold cultural knowledge or responsibility for the country in which the Paling Yards study area is located.

CONCLUSION

ERM have prepared this supplementary cultural heritage report to satisfy the OEH's request for clarification regarding the discussion of significance in Section 5 of the *Anderson Environmental Consultants Pty Ltd June 2013 Indigenous and Non-Indigenous Archaeological Heritage for Proposed Paling Yards Wind Farm*.

The eight artefact sites (P1-P8) recorded during this study have been assigned scientific significance in terms of rarity, representativeness, archaeological landscape, connectedness, integrity and condition, complexity, and archaeological sensitivity. Stone artefact scatters are the only site type represented in the region and those located within the Paling Yards study area have not demonstrated a significantly greater diversity or complexity in comparison to other known sites within the region. All of the sites identified within the study area are common site types at a local and regional level.

Four of the sites were identified as containing low archaeological significance, with the remaining four having a moderate level of significance, based primarily on their potential to reveal in situ sub-surface deposits. Only site P8, is likely to come within the zone of potential impact from turbine locations, although there is the opportunity to ensure that micro-siting of turbines in this and similar locations avoids areas of moderate or high risk. As a minimum a 100m separation or buffer distance should be maintained from site P8, which would largely avoid any adverse impacts, or alternatively, further archaeological examinations could be conducted to assess the size and nature of any potential surface or sub-surface archaeological deposits, in areas represent a moderate level of archaeological significance. If sub-surface investigation were required, then this would be recommended to occur post approval as part of a Construction Heritage Management Plan.

This report has also found that the identification of archaeological and Aboriginal cultural heritage items associated with the Paling Yards study area was in accordance with the DGRs for this project. All assessments have been developed in consultation with Aboriginal people who hold cultural knowledge or responsibility for the country in which the Paling Yards study area is part of.

REFERENCES

Anderson Environmental Consultants, Heritage Report, November 2012 (Revised June 2013), Indigenous and Non-Indigenous Archaeological Heritage for proposed Paling Yards Wind Farm

Australia ICOMOS 1999, Australia ICOMOS Charter for the Conservation of Places of Cultural Significance (the Burra Charter), revised edition, Australia ICOMOS, Canberra.

DEC 2004, *Interim Community Consultation Requirements for Applicants*. National Parks and Wildlife ACT 1974: Part 6 Approvals.

DEC 2005, *Guidelines for Aboriginal Cultural Heritage Impact Assessment and Community Consultation*. Department of Environment and Conservation.

Heritage Concepts, June 2005, Aboriginal and Historic Archaeological Assessment and Statement of Heritage Impact – Paling Yards Wind Farm Heritage Report

NPWS 1999, *Aboriginal Cultural Heritage: Standards and Guidelines Kit*. NSW National Parks and Wildlife Service, Hurstville.

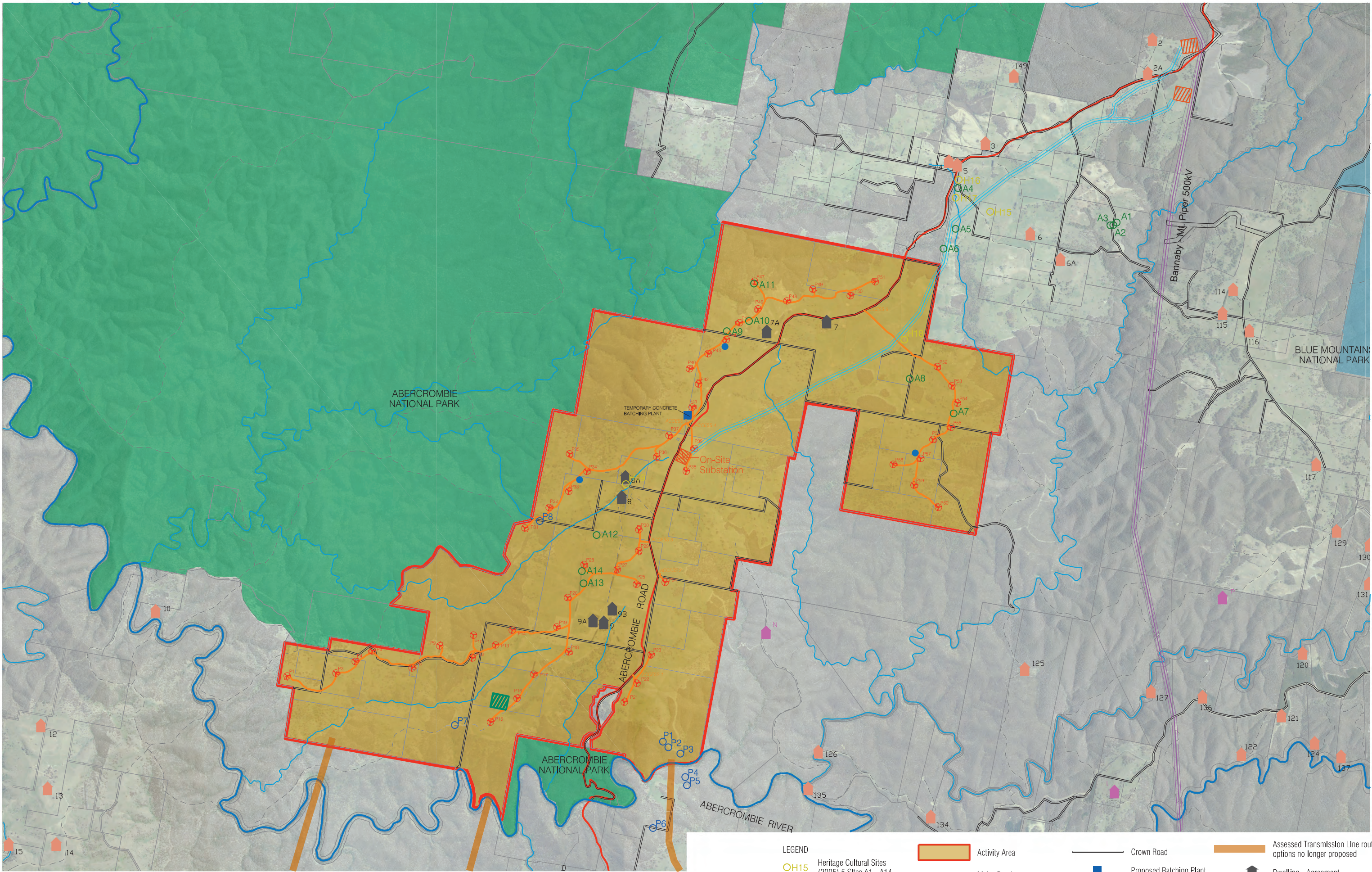
OEH 2010, *Aboriginal cultural heritage consultation requirements for proponents 2010*. Office of Environmental and Heritage, Department of Premier and Cabinet, Sydney.

OEH 2010, *Guide to investigating, assessing and reporting on Aboriginal cultural heritage in NSW*. Office of Environmental and Heritage, Department of Premier and Cabinet, Sydney.

OEH 2010. *Code of Practice for Archaeological Investigation of Aboriginal Objects in New South Wales*.

Annex A

Location of Archaeological and Cultural Heritage Sites



LEGEND					
OH15	Heritage Cultural Sites (2005) 5 Sites A1 - A14	[Red outline]	Activity Area	[Grey line]	Crown Road
A1	Heritage Aboriginal Sites (2005) 14 Sites H15 - H19	[Red line]	Major Road	[Blue square]	Proposed Batching Plant
P6	Heritage Aboriginal Sites (Current) 8 Sites P1 - P8	[Purple line]	Transmission Line	[Red circle]	Proposed Turbines
		[Orange line]	Proposed Access Track	[Red square]	Proposed Substation Location
		[Blue line]	Proposed transmission line connection options	[Purple square]	Dwelling - Non Identified
		[Orange line]	Assessed Transmission Line route options no longer proposed	[Black house]	Dwelling - Agreement
				[Red house]	Dwelling - No Agreement
				[Blue circle]	Monitoring Mast



ABORIGINAL ARCHEOLOGICAL AND HISTORIC CULTURAL HERITAGE SITES
PALING YARDS WIND FARM



Annex B

Newspaper Advertisement
Seeking Interested Aboriginal
Stakeholders



UNION FENOSA

WIND AUSTRALIA

ABORIGINAL COMMUNITY INVOLVEMENT

PROPOSED PALING YARDS WIND FARM

Anderson Environmental Consultants Pty Ltd on behalf of Union Fenosa Wind Australia Pty Ltd is seeking to identify Aboriginal Stakeholder Groups and/or people wishing to be involved in an Aboriginal Assessment at the proposed Paling Yards Wind Farm.

Consultation for the project will be conducted in accordance with the Aboriginal cultural heritage consultation requirements for proponents 2010 (Environment, Climate Change and Water) – Part 6 National Parks and Wildlife Act 1974.

Interested people or groups are invited to register in writing to:

Attn: Jason Anderson

Anderson Environmental Consultants Pty Ltd

PO Box 511

CHATSWOOD 2067

Applications must include all contact details including: name, contact number(s), email and/or fax. Telephone enquiries can be made by calling 1300 302 507. The closing date for applications is 5th January 2011.

Annex C

Letter Correspondence
Seeking Interested Aboriginal
Stakeholders



Your reference
Our reference
Contact

Paling Wind Farm, Oberon Shire
DOC13/21343
Paul Houston 68835361

Union Fenosa Wind Farm Australia Pty Ltd
Suite 403, 68 York Street
Sydney NSW 2000

Att: Shaq Mohajerani

13th May 2013

Dear Shaq,

**WRITTEN NOTIFICATION AS REQUIRED UNDER OFFICE OF ENVIRONMENT AND
HERITAGE (OEH) ABORIGINAL CULTURAL HERITAGE REQUIREMENT FOR
PROPOSERS 2010 – For a proposed Paling Wind Farm, Oberon Shire NSW**

I refer to your letter dated 10th May 2013 to the Office of Environment and Heritage (OEH) regarding the above matter.

A list of known Aboriginal parties that OEH feels is likely to have an interest in this development is attached as Attachment 1 (overleaf). Please note this list is not necessarily an exhaustive list of all interested Aboriginal parties and receipt of this list does not remove the requirement of a proponent/consultant to advertise in local print media and contact other bodies seeking interested Aboriginal parties, in accordance with the requirements.

If you wish to discuss any of the above matters further please contact me, at your earliest convenience, on (02) 6883 5361.

Yours sincerely

Paul Houston
Aboriginal Heritage Planning Officer
OEH

The Department of Environment Climate Change and Water is now known as
The Office of Environment and Heritage.

PO Box 2111, Dubbo NSW 2830
48-52 Wingewarra St Dubbo NSW
Tel: (02) 6883 5330 Fax: (02) 6884 9382
www.environment.nsw.gov.au

ATTACHMENT 1

OEH'S LIST OF ABORIGINAL STAKEHOLDER GROUPS WITHIN THE OBERON SHIRE - THAT MAY HAVE AN INTEREST IN THE PROJECT; PROVIDED AS PER THE "OEH ABORIGINAL CULTURAL HERITAGE REQUIREMENT FOR PROPONENTS 2010".

Organisation/Affiliation	Name/Title	Address
Bill Allen		75 Cory Pl , Windradyne NSw 2795
Dhuuluu-Yala Aboriginal Corporation	Chairperson	63 Stanley Street Bathurst 2795.
Gundungurra Aboriginal Heritage Association inc	Chairperson	PO Box 31 Lawson NSW 2783
Gundungurra Tribal Council Aboriginal Corporation	Chairperson	14 Oak St, Katoomba, NSW, 2780
Lyn Syme	North-East Wiraduri	PO Box 29 KANDOS NSW 2848
Mingaan Aboriginal Corporation	Helen Riley	38 Tweed Rd Lithgow NSW 2790
Mooka	Neville Williams	Po Box 70 Cowra NSW 2794
North- Eastern Wiradjuri		PO Box 29, Kandos NSW 2848
Trevor Robinson		Po Box 73, Peak Hill NSW 2869
Warrabinga Native Tittle Claimants Aboriginal Corporation	The Board of Directors	PO Box 282, Mudgee NSW 2850
Wiradjuri Council of Elders	Robert Clegg	3 Loretta Pl, Glendenning NSW 2761
Wiradjuri Interim Working Party		Po Box 73, Peak Hill NSW 2869
Wiradjuri traditional Owners Central West Aboriginal Corporation	Chairperson	14 Duramana Rd, Eglington NSW 2795

The Department of Environment Climate Change and Water is now known as
The Office of Environment and Heritage.

Date: Monday 20th May 2013
Ref: 20130520-PYWF01

Mr Adam Black
Office of the Registrar
Aboriginal Land Rights Act 1983 (NSW)
PO Box 112, Glebe NSW 2037

Subject: Stakeholder Consultation for Aboriginal Cultural Heritage Assessment

Dear Mr Black,

Union Fenosa Wind Australia Pty Ltd (UFWA) is currently proposing a wind farm project called 'Paling Yards' (see enclosed regional map) that is located in the southern section of the Oberon Shire Council, immediately north of the shire boundary with the Upper Lachlan Shire Council. The proposed Paling Yards wind farm project is a transitional Part 3A Major Project under the Environmental Planning and Assessment Act 1979 (NSW), and will continue to be assessed and determined under Part 3A provisions of the Act.

UFWA has commissioned Anderson Environmental Consultants Pty Ltd to undertake the investigation and assessment of indigenous archaeological heritage, in consultation with relevant stakeholders. The project site area falls within the boundaries of the Pejar Local Aboriginal Land Council (Pejar LALC) as defined on the mapped areas under the '*Aboriginal Land Rights Act (1983) – Aboriginal Land Councils*'. As part of the Project's consultation strategy framework, the Pejar LALC has been involved in the consultation process for this project.

The purpose of this notification letter is to ascertain if the Office of the Registrar is interested in participation through the assessment and development of this proposed project and, if the proposed project is granted development approval, to participate in the process for preparation of the Aboriginal / Cultural Heritage Management Plan. In order to facilitate the stakeholder consultation process, we would appreciate your feedback to advise us if the Office of the Registrar requests consultation for this project. Your feedback should be in writing to the address shown below, by no later than Monday 3rd June 2013.

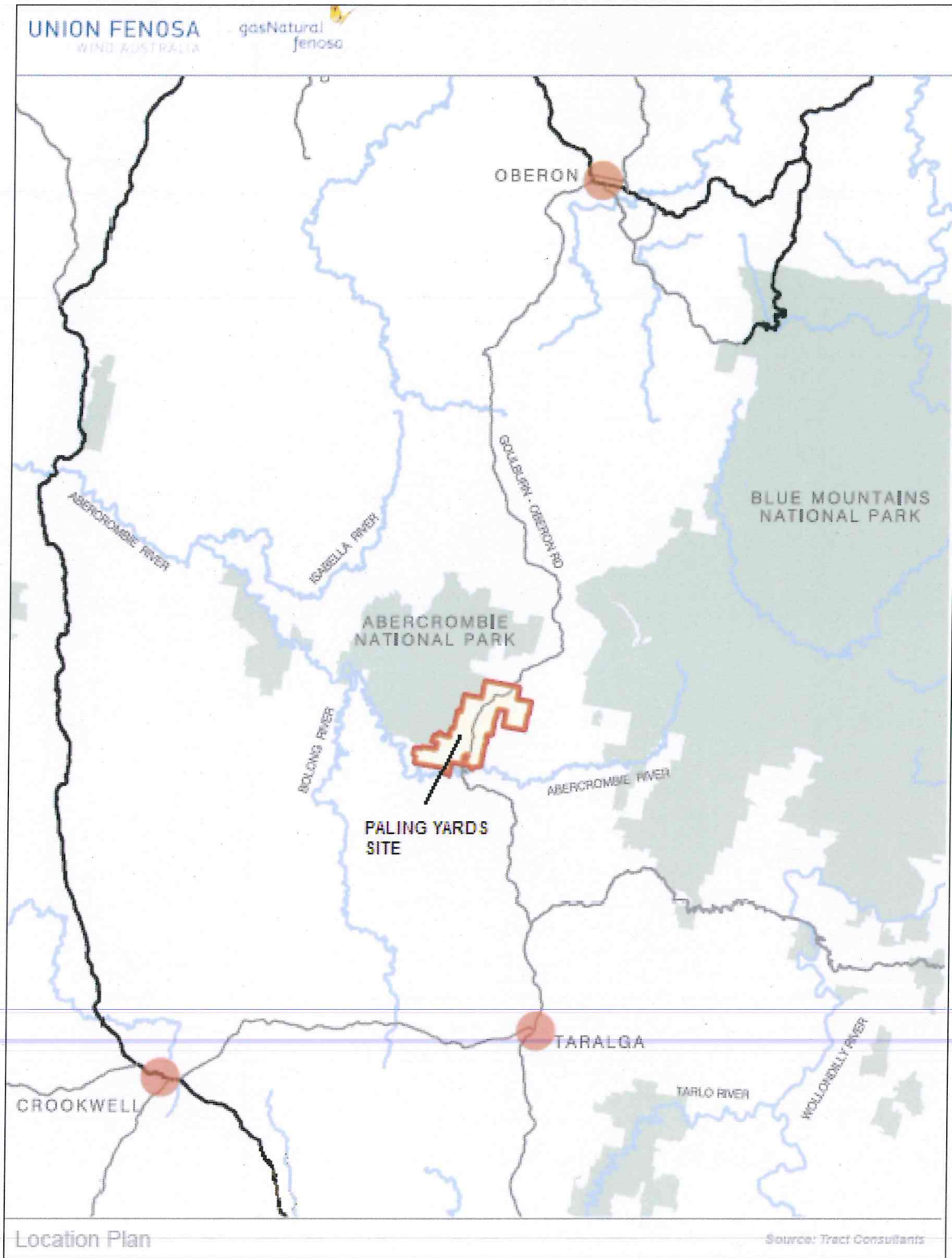
Shaq Mohajerani
Union Fenosa Wind Australia
Suite 4.03, 68 York Street
Sydney NSW 2000

Should you have any queries on this matter, please don't hesitate to contact me on 1800 457 181.

Regards,


Shaq Mohajerani
Project Development Manager

Location of proposed Paling Yards wind farm project



Annex D

Letter Correspondence
Seeking Interest from
Nominated Stakeholders to
be Registered as Part of the
Aboriginal Consultation for
the Project

Date: Thursday 16th May 2013
Ref: 20130516-PYWF01

Mr Bill Allen
75 Cory Place
Windradyne NSW 2795

Dear Mr Allen

Subject: Stakeholder Consultation for Aboriginal Cultural Heritage Assessment

Union Fenosa Wind Australia Pty Ltd (UFWA) is currently proposing a wind farm project called 'Paling Yards' (see enclosed regional map) that is located in the southern section of the Oberon Shire Council, immediately north of the shire boundary with the Upper Lachlan Shire Council. The proposed Paling Yards wind farm project is a transitional Part 3A Major Project under the Environmental Planning and Assessment Act 1979 (NSW), and will continue to be assessed and determined under Part 3A provisions of the Act.

UFWA has commissioned Anderson Environmental Consultants Pty Ltd to undertake the investigation and assessment of indigenous archaeological heritage, in consultation with relevant stakeholders. The project site area falls within the boundaries of the Pejar Local Aboriginal Land Council (Pejar LALC) as defined on the mapped areas under the '*Aboriginal Land Rights Act (1983) – Aboriginal Land Councils*'. As part of the Project's consultation process, Pejar LALC has been involved in the consultation process.

The purpose of this notification letter is to ascertain if you are interested in participation through the assessment and development of this proposed project and, if the proposed project is granted development approval, to participate in the process for preparation of the Aboriginal / Cultural Heritage Management Plan. In order to facilitate the stakeholder consultation process, we would appreciate your feedback to advise us if you request consultation for this proposed project. Your feedback should be in writing to the address shown below, by no later than Friday 31st May 2013.

Shaq Mohajerani
Union Fenosa Wind Australia
Suite 4.03, 68 York Street
Sydney NSW 2000

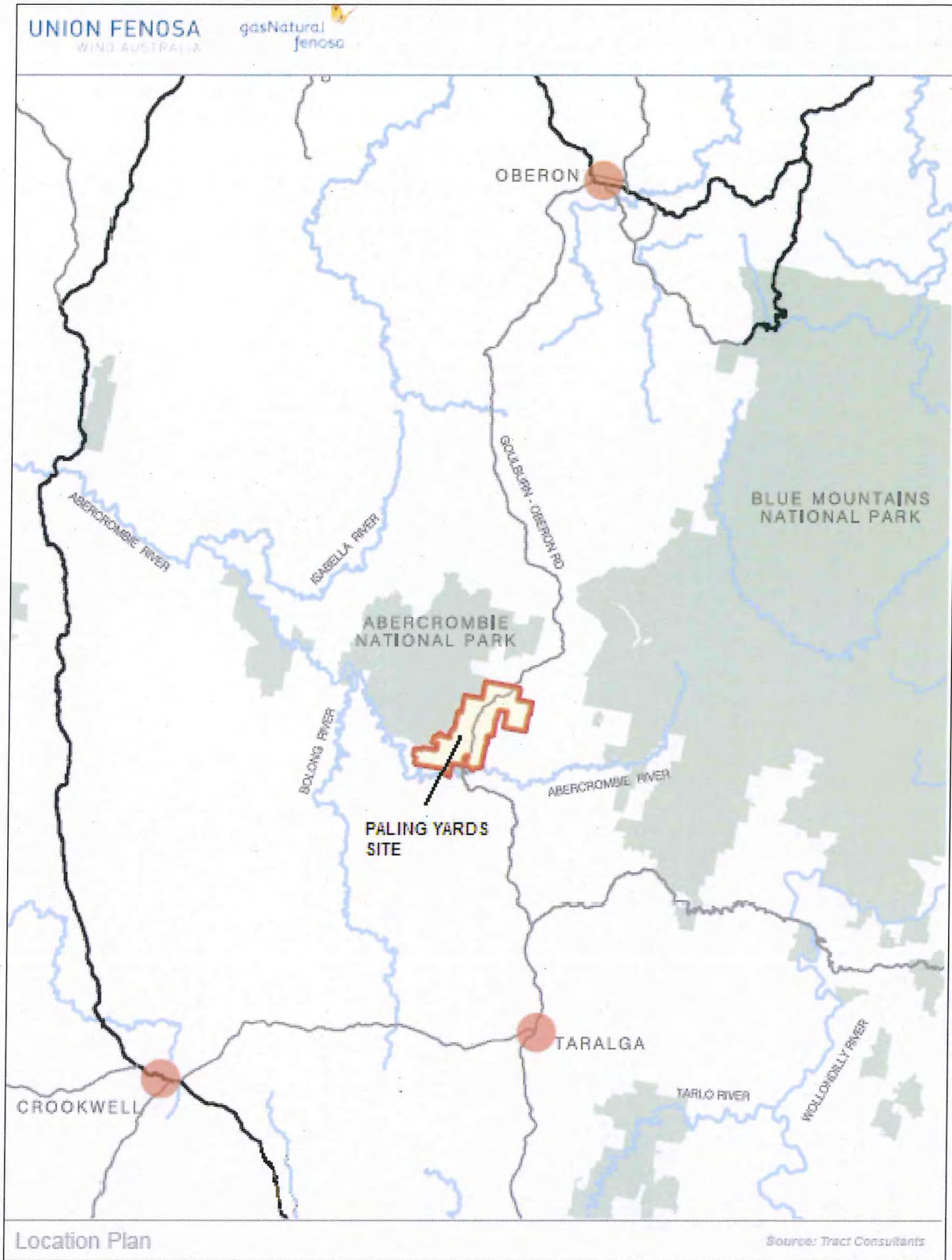
Should you have any queries on this matter, please don't hesitate to contact me on 1800 457 181.

Regards,



Shaq Mohajerani
Project Development Manager

Location of proposed Paling Yards wind farm project



Date: Thursday 16th May 2013
Ref: 20130516-PYWF02

Dhuuluu-Yala Aboriginal Corporation
63 Stanley Street
Bathurst NSW 2795

Subject: Stakeholder Consultation for Aboriginal Cultural Heritage Assessment

Dear Chairperson,

Union Fenosa Wind Australia Pty Ltd (UFWA) is currently proposing a wind farm project called 'Paling Yards' (see enclosed regional map) that is located in the southern section of the Oberon Shire Council, immediately north of the shire boundary with the Upper Lachlan Shire Council. The proposed Paling Yards wind farm project is a transitional Part 3A Major Project under the Environmental Planning and Assessment Act 1979 (NSW), and will continue to be assessed and determined under Part 3A provisions of the Act.


UFWA has commissioned Anderson Environmental Consultants Pty Ltd to undertake the investigation and assessment of indigenous archaeological heritage, in consultation with relevant stakeholders. The project site area falls within the boundaries of the Pejar Local Aboriginal Land Council (Pejar LALC) as defined on the mapped areas under the '*Aboriginal Land Rights Act (1983) – Aboriginal Land Councils*'. As part of the Project's consultation process, Pejar LALC has been involved in the consultation process.

The purpose of this notification letter is to ascertain if the Dhuuluu-Yala Aboriginal Corporation is interested in participation through the assessment and development of this proposed project and, if the proposed project is granted development approval, to participate in the process for preparation of the Aboriginal / Cultural Heritage Management Plan. In order to facilitate the stakeholder consultation process, we would appreciate your feedback to advise us if Dhuuluu-Yala Aboriginal Corporation requests consultation for this project. Your feedback should be in writing to the address shown below, by no later than Friday 31st May 2013.

Shaq Mohajerani
Union Fenosa Wind Australia
Suite 4.03, 68 York Street
Sydney NSW 2000

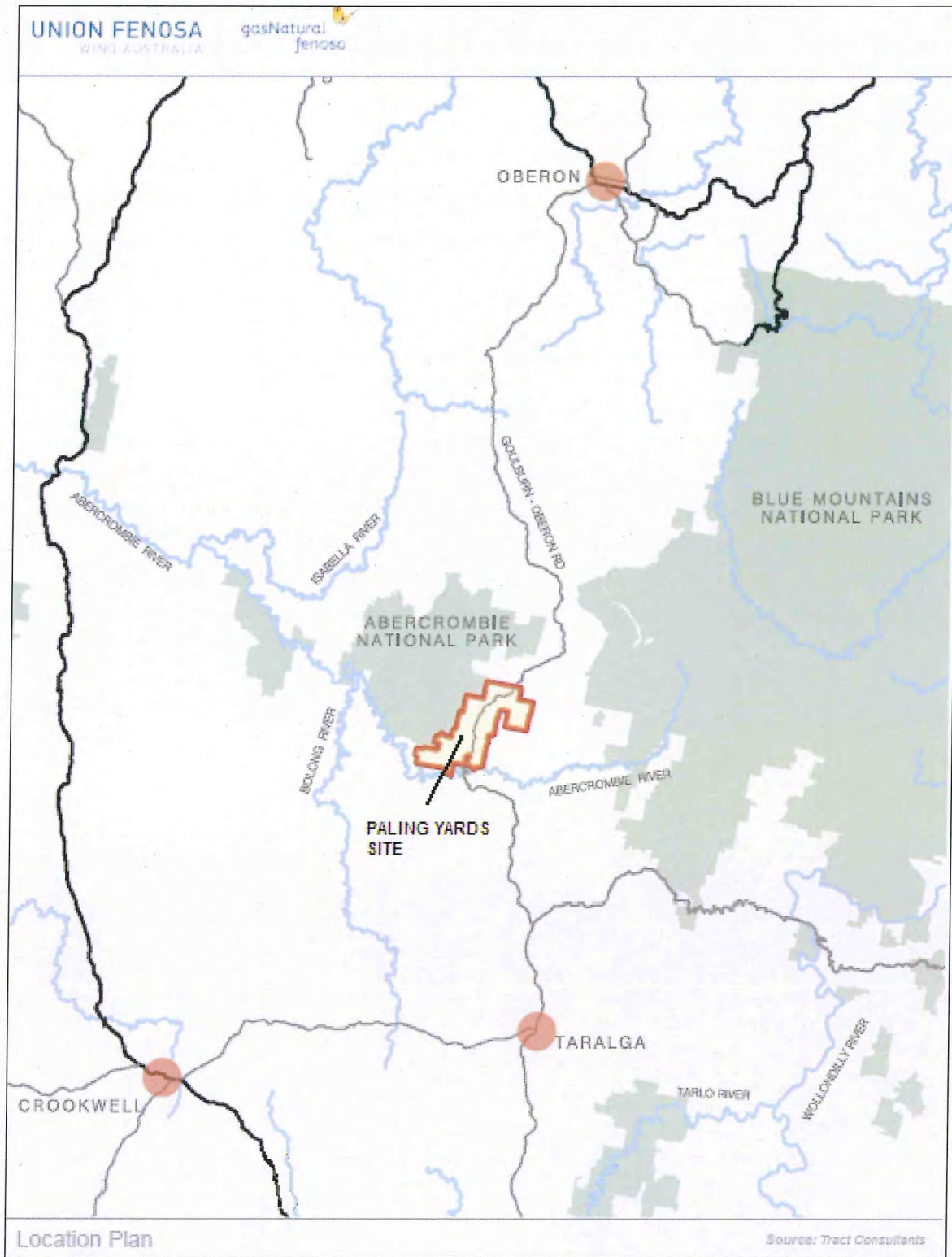
Should you have any queries on this matter, please don't hesitate to contact me on 1800 457 181.

Regards,



Shaq Mohajerani
Project Development Manager

Location of proposed Paling Yards wind farm project



Date: Thursday 16th May 2013
Ref: 20130516-PYWF03

Gundungurra Aboriginal Heritage Association Inc
PO Box 31
Lawson NSW 2783

Subject: Stakeholder Consultation for Aboriginal Cultural Heritage Assessment

Dear Chairperson,

Union Fenosa Wind Australia Pty Ltd (UFWA) is currently proposing a wind farm project called 'Paling Yards' (see enclosed regional map) that is located in the southern section of the Oberon Shire Council, immediately north of the shire boundary with the Upper Lachlan Shire Council. The proposed Paling Yards wind farm project is a transitional Part 3A Major Project under the Environmental Planning and Assessment Act 1979 (NSW), and will continue to be assessed and determined under Part 3A provisions of the Act.

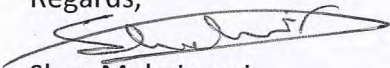
UFWA has commissioned Anderson Environmental Consultants Pty Ltd to undertake the investigation and assessment of indigenous archaeological heritage, in consultation with relevant stakeholders. The project site area falls within the boundaries of the Pejar Local Aboriginal Land Council (Pejar LALC) as defined on the mapped areas under the '*Aboriginal Land Rights Act (1983) – Aboriginal Land Councils*'. As part of the Project's consultation process, Pejar LALC has been involved in the consultation process.

The purpose of this notification letter is to ascertain if Gundungurra Aboriginal Heritage Association Inc is interested in participation through the assessment and development of this proposed project and, if the proposed project is granted development approval, to participate in the process for preparation of the Aboriginal / Cultural Heritage Management Plan. In order to facilitate the stakeholder consultation process, we would appreciate your feedback to advise us if Gundungurra Aboriginal Heritage Association Inc requests consultation for this project. Your feedback should be in writing to the address shown below, by no later than Friday 31st May 2013.

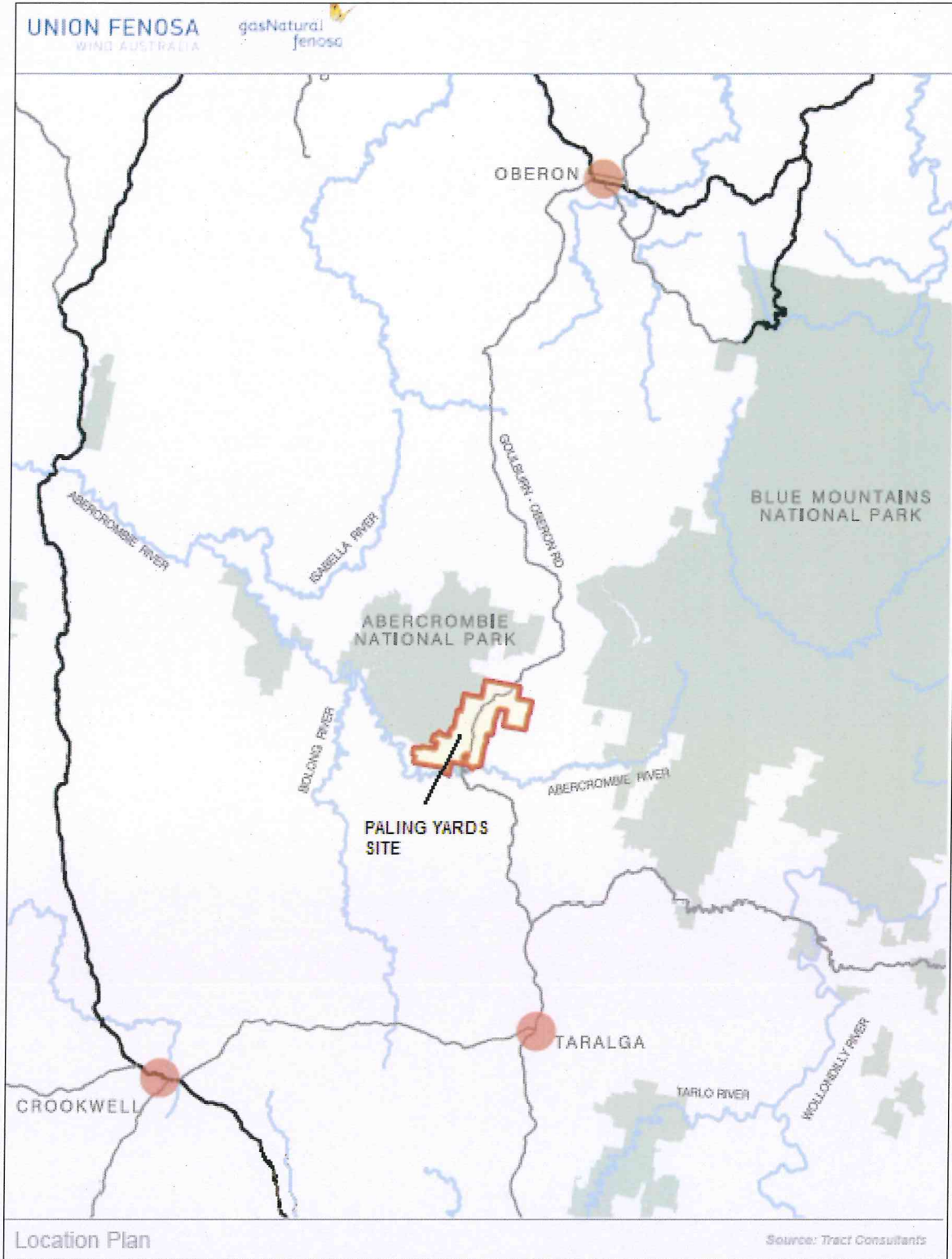
Shaq Mohajerani
Union Fenosa Wind Australia
Suite 4.03, 68 York Street
Sydney NSW 2000

Should you have any queries on this matter, please don't hesitate to contact me on 1800 457 181.

Regards,


Shaq Mohajerani
Project Development Manager

Location of proposed Paling Yards wind farm project



Date: Thursday 16th May 2013
Ref: 20130516-PYWF04

Gundungurra Tribal Council Aboriginal Corporation
14 Oak Street
Katoomba NSW 2780

Subject: Stakeholder Consultation for Aboriginal Cultural Heritage Assessment

Dear Ms Sharon Brown,

Union Fenosa Wind Australia Pty Ltd (UFWA) is currently proposing a wind farm project called 'Paling Yards' (see enclosed regional map) that is located in the southern section of the Oberon Shire Council, immediately north of the shire boundary with the Upper Lachlan Shire Council. The proposed Paling Yards wind farm project is a transitional Part 3A Major Project under the Environmental Planning and Assessment Act 1979 (NSW), and will continue to be assessed and determined under Part 3A provisions of the Act.

UFWA has commissioned Anderson Environmental Consultants Pty Ltd to undertake the investigation and assessment of indigenous archaeological heritage, in consultation with relevant stakeholders. The project site area falls within the boundaries of the Pejar Local Aboriginal Land Council (Pejar LALC) as defined on the mapped areas under the '*Aboriginal Land Rights Act (1983) – Aboriginal Land Councils*'. As part of the Project's consultation process, Pejar LALC has been involved in the consultation process.

The purpose of this notification letter is to ascertain if the Gundungurra Tribal Council Aboriginal Corporation is interested in participation through the assessment and development of this proposed project and, if the proposed project is granted development approval, to participate in the process for preparation of the Aboriginal / Cultural Heritage Management Plan. In order to facilitate the stakeholder consultation process, we would appreciate your feedback to advise us if Gundungurra Tribal Council Aboriginal Corporation requests consultation for this project. Your feedback should be in writing to the address shown below, by no later than Friday 31st May 2013.

Shaq Mohajerani
Union Fenosa Wind Australia
Suite 4.03, 68 York Street
Sydney NSW 2000

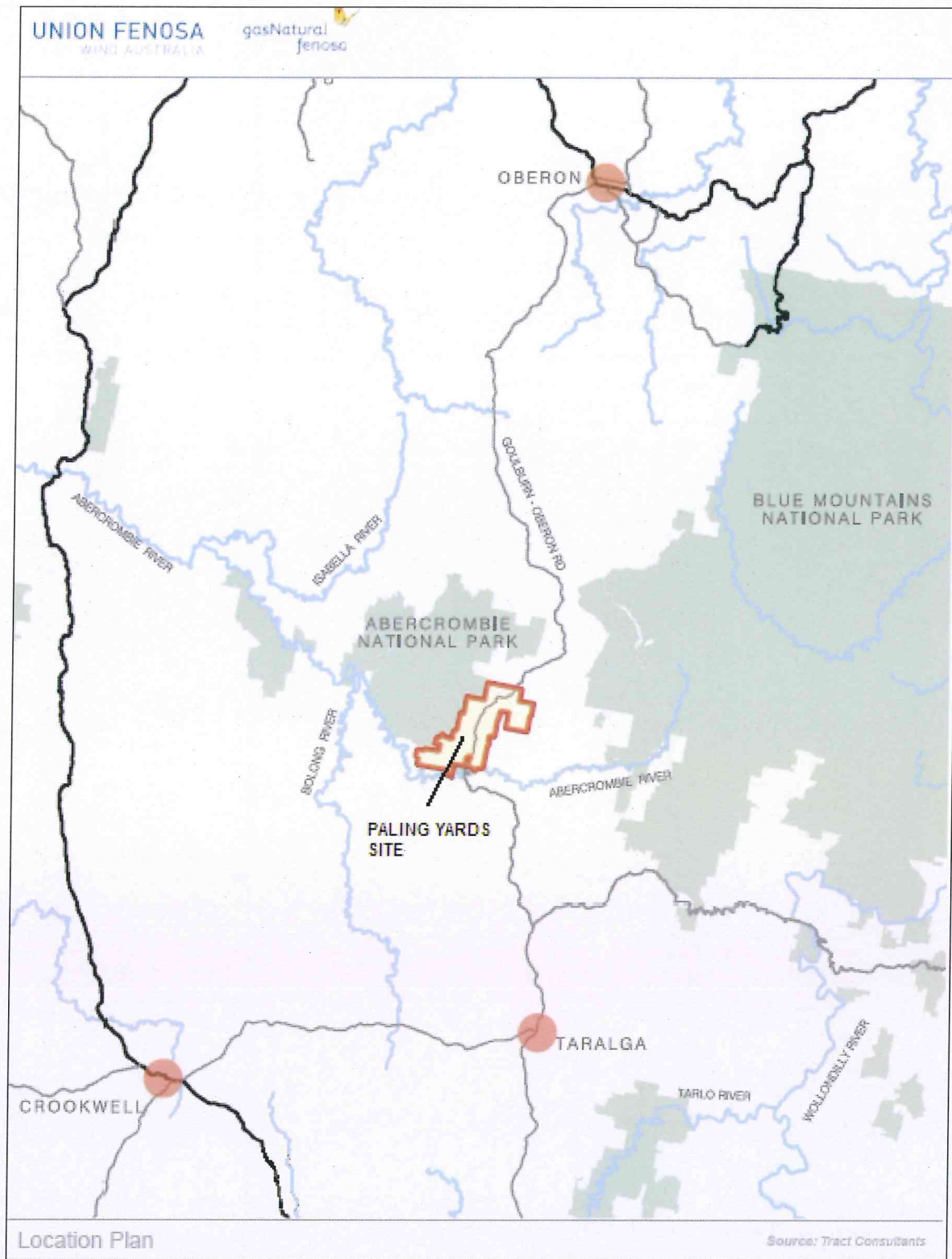
Should you have any queries on this matter, please don't hesitate to contact me on 1800 457 181.

Regards,



Shaq Mohajerani
Project Development Manager

Location of proposed Paling Yards wind farm project



Date: Thursday 16th May 2013
Ref: 20130516-PYWF05

Ms Lyn Syme
North - Eastern Wiradjuri
PO Box 29
Kandos NSW 2848

Subject: Stakeholder Consultation for Aboriginal Cultural Heritage Assessment

Dear Ms Syme,

Union Fenosa Wind Australia Pty Ltd (UFWA) is currently proposing a wind farm project called 'Paling Yards' (see enclosed regional map) that is located in the southern section of the Oberon Shire Council, immediately north of the shire boundary with the Upper Lachlan Shire Council. The proposed Paling Yards wind farm project is a transitional Part 3A Major Project under the Environmental Planning and Assessment Act 1979 (NSW), and will continue to be assessed and determined under Part 3A provisions of the Act.

UFWA has commissioned Anderson Environmental Consultants Pty Ltd to undertake the investigation and assessment of indigenous archaeological heritage, in consultation with relevant stakeholders. The project site area falls within the boundaries of the Pejar Local Aboriginal Land Council (Pejar LALC) as defined on the mapped areas under the '*Aboriginal Land Rights Act (1983) – Aboriginal Land Councils*'. As part of the Project's consultation process, Pejar LALC has been involved in the consultation process.

The purpose of this notification letter is to ascertain if North-Eastern Wiradjuri is interested in participation through the assessment and development of this proposed project and, if the proposed project is granted development approval, to participate in the process for preparation of the Aboriginal / Cultural Heritage Management Plan. In order to facilitate the stakeholder consultation process, we would appreciate your feedback to advise us if North-Eastern Wiradjuri requests consultation for this project. Your feedback should be in writing to the address shown below, by no later than Friday 31st May 2013.

Shaq Mohajerani
Union Fenosa Wind Australia
Suite 4.03, 68 York Street
Sydney NSW 2000

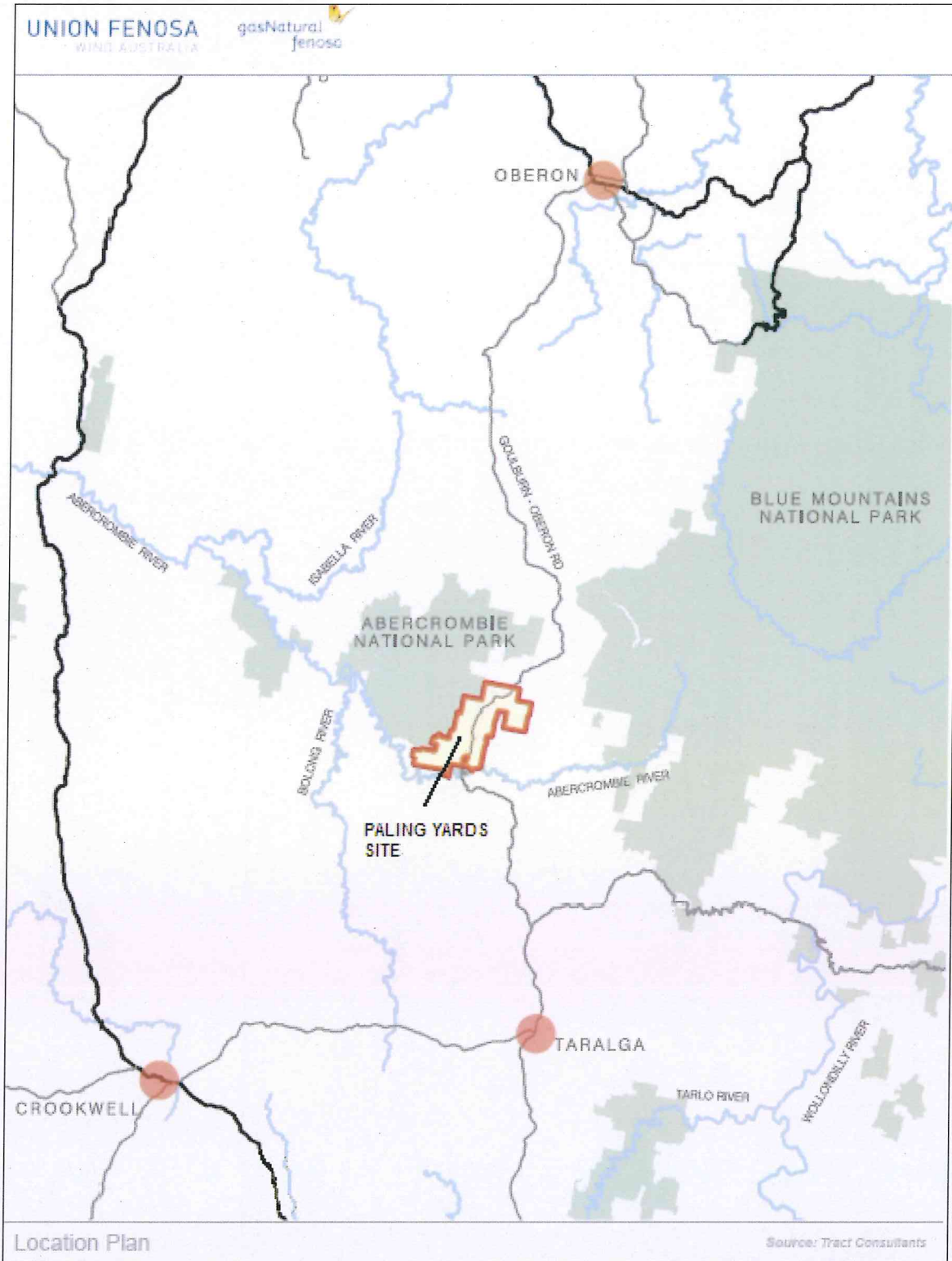
Should you have any queries on this matter, please don't hesitate to contact me on 1800 457 181.

Regards,



Shaq Mohajerani
Project Development Manager

Location of proposed Paling Yards wind farm project



Date: Thursday 16th May 2013
Ref: 20130516-PYWF06

Ms Helen Riley
Mingaan Aboriginal Corporation
38 Tweed Road
Lithgow NSW 2790

Subject: Stakeholder Consultation for Aboriginal Cultural Heritage Assessment

Dear Ms Riley,

Union Fenosa Wind Australia Pty Ltd (UFWA) is currently proposing a wind farm project called 'Paling Yards' (see enclosed regional map) that is located in the southern section of the Oberon Shire Council, immediately north of the shire boundary with the Upper Lachlan Shire Council. The proposed Paling Yards wind farm project is a transitional Part 3A Major Project under the Environmental Planning and Assessment Act 1979 (NSW), and will continue to be assessed and determined under Part 3A provisions of the Act.

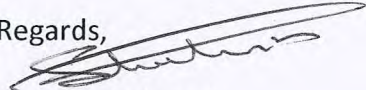
UFWA has commissioned Anderson Environmental Consultants Pty Ltd to undertake the investigation and assessment of indigenous archaeological heritage, in consultation with relevant stakeholders. The project site area falls within the boundaries of the Pejar Local Aboriginal Land Council (Pejar LALC) as defined on the mapped areas under the '*Aboriginal Land Rights Act (1983) – Aboriginal Land Councils*'. As part of the Project's consultation process, Pejar LALC has been involved in the consultation process.

The purpose of this notification letter is to ascertain if Mingaan Aboriginal Corporation is interested in participation through the assessment and development of this proposed project and, if the proposed project is granted development approval, to participate in the process for preparation of the Aboriginal / Cultural Heritage Management Plan. In order to facilitate the stakeholder consultation process, we would appreciate your feedback to advise us if Mingaan Aboriginal Corporation requests consultation for this project. Your feedback should be in writing to the address shown below, by no later than Friday 31st May 2013.

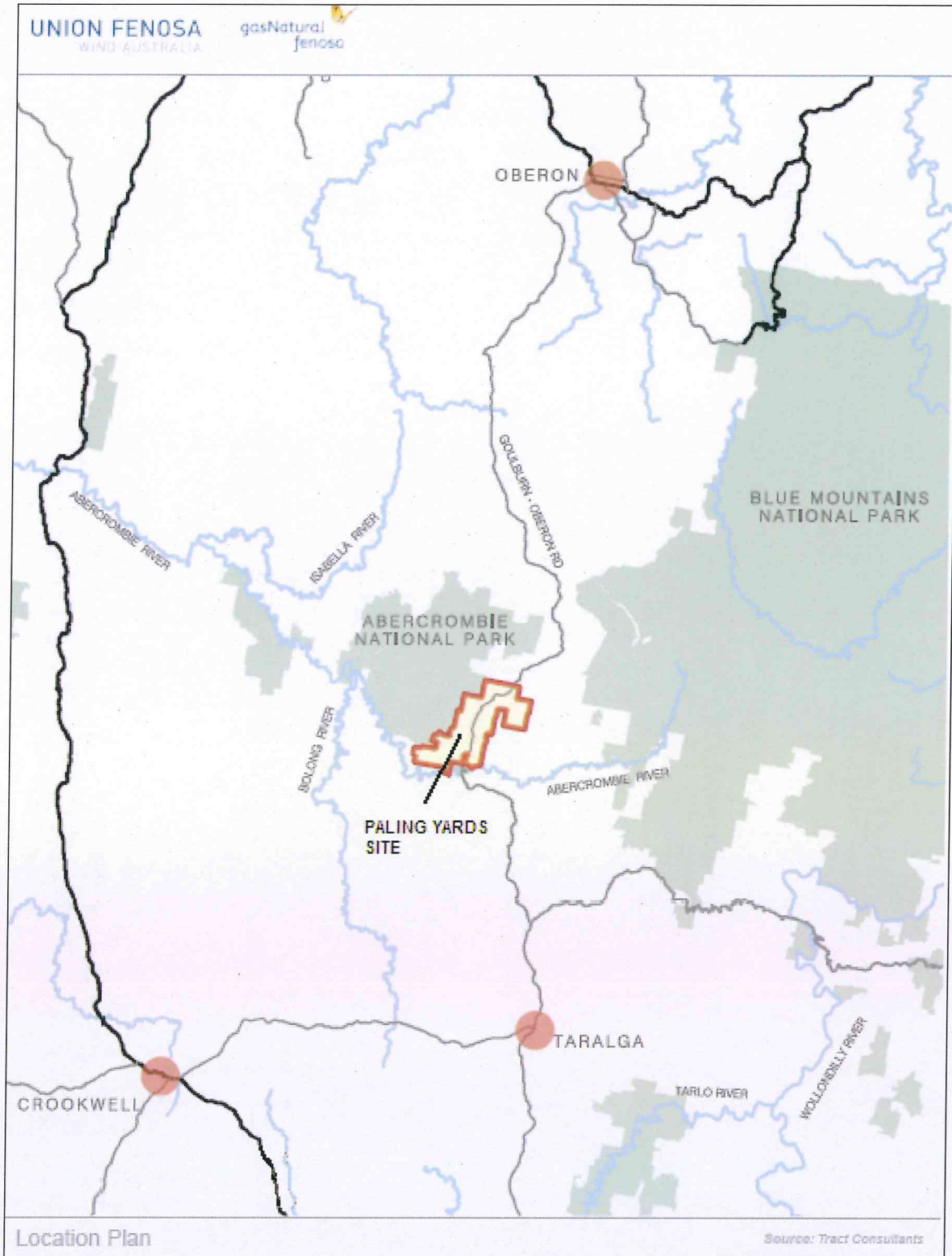
Shaq Mohajerani
Union Fenosa Wind Australia
Suite 4.03, 68 York Street
Sydney NSW 2000

Should you have any queries on this matter, please don't hesitate to contact me on 1800 457 181.

Regards,


Shaq Mohajerani
Project Development Manager

Location of proposed Paling Yards wind farm project



Date: Thursday 16th May 2013
Ref: 20130516-PYWF07

Mr Neville Williams
Mooka Traditional Owners Council
PO Box 70
Cowra NSW 2794

Subject: Stakeholder Consultation for Aboriginal Cultural Heritage Assessment

Dear Mr Williams,

Union Fenosa Wind Australia Pty Ltd (UFWA) is currently proposing a wind farm project called 'Paling Yards' (see enclosed regional map) that is located in the southern section of the Oberon Shire Council, immediately north of the shire boundary with the Upper Lachlan Shire Council. The proposed Paling Yards wind farm project is a transitional Part 3A Major Project under the Environmental Planning and Assessment Act 1979 (NSW), and will continue to be assessed and determined under Part 3A provisions of the Act.

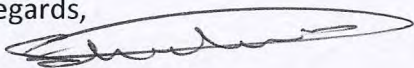
UFWA has commissioned Anderson Environmental Consultants Pty Ltd to undertake the investigation and assessment of indigenous archaeological heritage, in consultation with relevant stakeholders. The project site area falls within the boundaries of the Pejar Local Aboriginal Land Council (Pejar LALC) as defined on the mapped areas under the '*Aboriginal Land Rights Act (1983) – Aboriginal Land Councils*'. As part of the Project's consultation process, Pejar LALC has been involved in the consultation process.

The purpose of this notification letter is to ascertain if Mooka Traditional Owners Council is interested in participation through the assessment and development of this proposed project and, if the proposed project is granted development approval, to participate in the process for preparation of the Aboriginal / Cultural Heritage Management Plan. In order to facilitate the stakeholder consultation process, we would appreciate your feedback to advise us if Mooka Traditional Owners Council requests consultation for this project. Your feedback should be in writing to the address shown below, by no later than Friday 31st May 2013.

Shaq Mohajerani
Union Fenosa Wind Australia
Suite 4.03, 68 York Street
Sydney NSW 2000

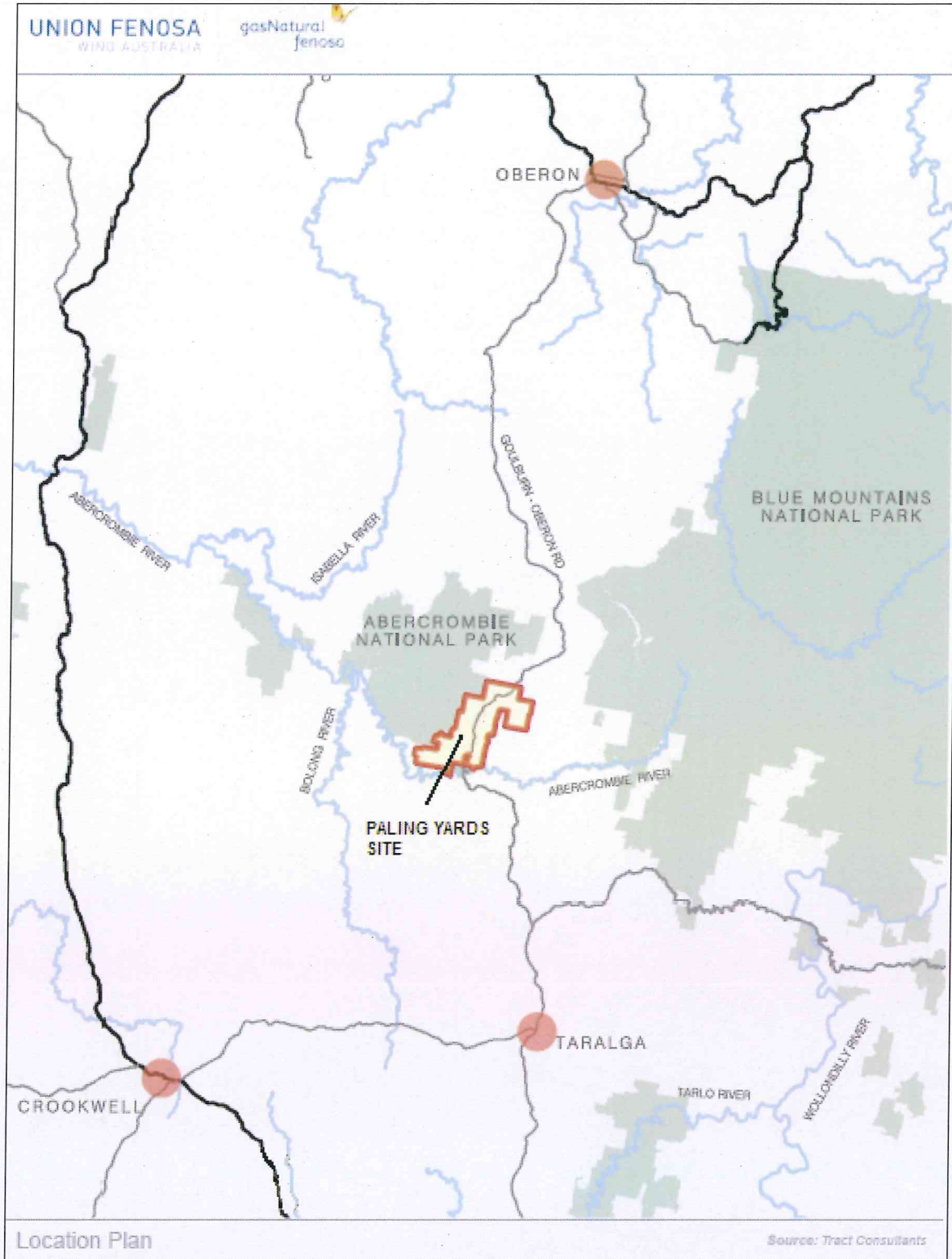
Should you have any queries on this matter, please don't hesitate to contact me on 1800 457 181.

Regards,



Shaq Mohajerani
Project Development Manager

Location of proposed Paling Yards wind farm project



Date: Thursday 16th May 2013
Ref: 20130516-PYWF08

Mr Trevor Robinson
Wiradjuri Interim Working Party
PO Box 73
Peak Hill NSW 2869

Subject: Stakeholder Consultation for Aboriginal Cultural Heritage Assessment

Dear Mr Robinson,

Union Fenosa Wind Australia Pty Ltd (UFWA) is currently proposing a wind farm project called 'Paling Yards' (see enclosed regional map) that is located in the southern section of the Oberon Shire Council, immediately north of the shire boundary with the Upper Lachlan Shire Council. The proposed Paling Yards wind farm project is a transitional Part 3A Major Project under the Environmental Planning and Assessment Act 1979 (NSW), and will continue to be assessed and determined under Part 3A provisions of the Act.

UFWA has commissioned Anderson Environmental Consultants Pty Ltd to undertake the investigation and assessment of indigenous archaeological heritage, in consultation with relevant stakeholders. The project site area falls within the boundaries of the Pejar Local Aboriginal Land Council (Pejar LALC) as defined on the mapped areas under the '*Aboriginal Land Rights Act (1983) – Aboriginal Land Councils*'. As part of the Project's consultation process, Pejar LALC has been involved in the consultation process.

The purpose of this notification letter is to ascertain if Wiradjuri Interim Working Party is interested in participation through the assessment and development of this proposed project and, if the proposed project is granted development approval, to participate in the process for preparation of the Aboriginal / Cultural Heritage Management Plan. In order to facilitate the stakeholder consultation process, we would appreciate your feedback to advise us if Wiradjuri Interim Working Party requests consultation for this project. Your feedback should be in writing to the address shown below, by no later than Friday 31st May 2013.

Shaq Mohajerani
Union Fenosa Wind Australia
Suite 4.03, 68 York Street
Sydney NSW 2000

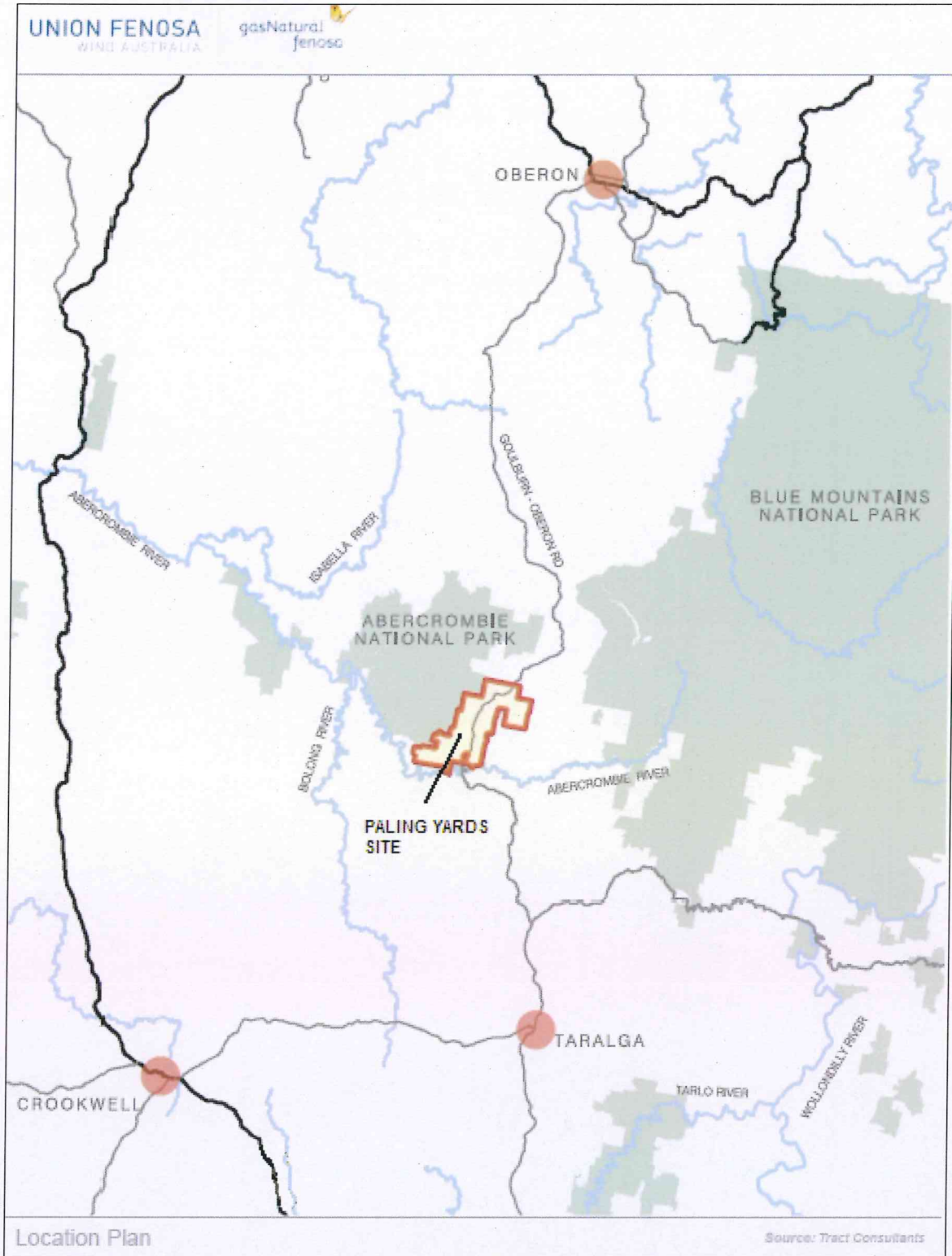
Should you have any queries on this matter, please don't hesitate to contact me on 1800 457 181.

Regards,



Shaq Mohajerani
Project Development Manager

Location of proposed Paling Yards wind farm project



Date: Thursday 16th May 2013
Ref: 20130516-PYWF09

Ms Wendy Lewis
Warrabinga Native Title Claimants Aboriginal Corporation
PO Box 282
Mudgee NSW 2850

Subject: Stakeholder Consultation for Aboriginal Cultural Heritage Assessment

Dear Ms Lewis,

Union Fenosa Wind Australia Pty Ltd (UFWA) is currently proposing a wind farm project called 'Paling Yards' (see enclosed regional map) that is located in the southern section of the Oberon Shire Council, immediately north of the shire boundary with the Upper Lachlan Shire Council. The proposed Paling Yards wind farm project is a transitional Part 3A Major Project under the Environmental Planning and Assessment Act 1979 (NSW), and will continue to be assessed and determined under Part 3A provisions of the Act.


UFWA has commissioned Anderson Environmental Consultants Pty Ltd to undertake the investigation and assessment of indigenous archaeological heritage, in consultation with relevant stakeholders. The project site area falls within the boundaries of the Pejar Local Aboriginal Land Council (Pejar LALC) as defined on the mapped areas under the '*Aboriginal Land Rights Act (1983) – Aboriginal Land Councils*'. As part of the Project's consultation process, Pejar LALC has been involved in the consultation process.

The purpose of this notification letter is to ascertain if Warrabinga Native Title Claimants Aboriginal Corporation is interested in participation through the assessment and development of this proposed project and, if the proposed project is granted development approval, to participate in the process for preparation of the Aboriginal / Cultural Heritage Management Plan. In order to facilitate the stakeholder consultation process, we would appreciate your feedback to advise us if Warrabinga Native Title Claimants Aboriginal Corporation requests consultation for this project. Your feedback should be in writing to the address shown below, by no later than Friday 31st May 2013.

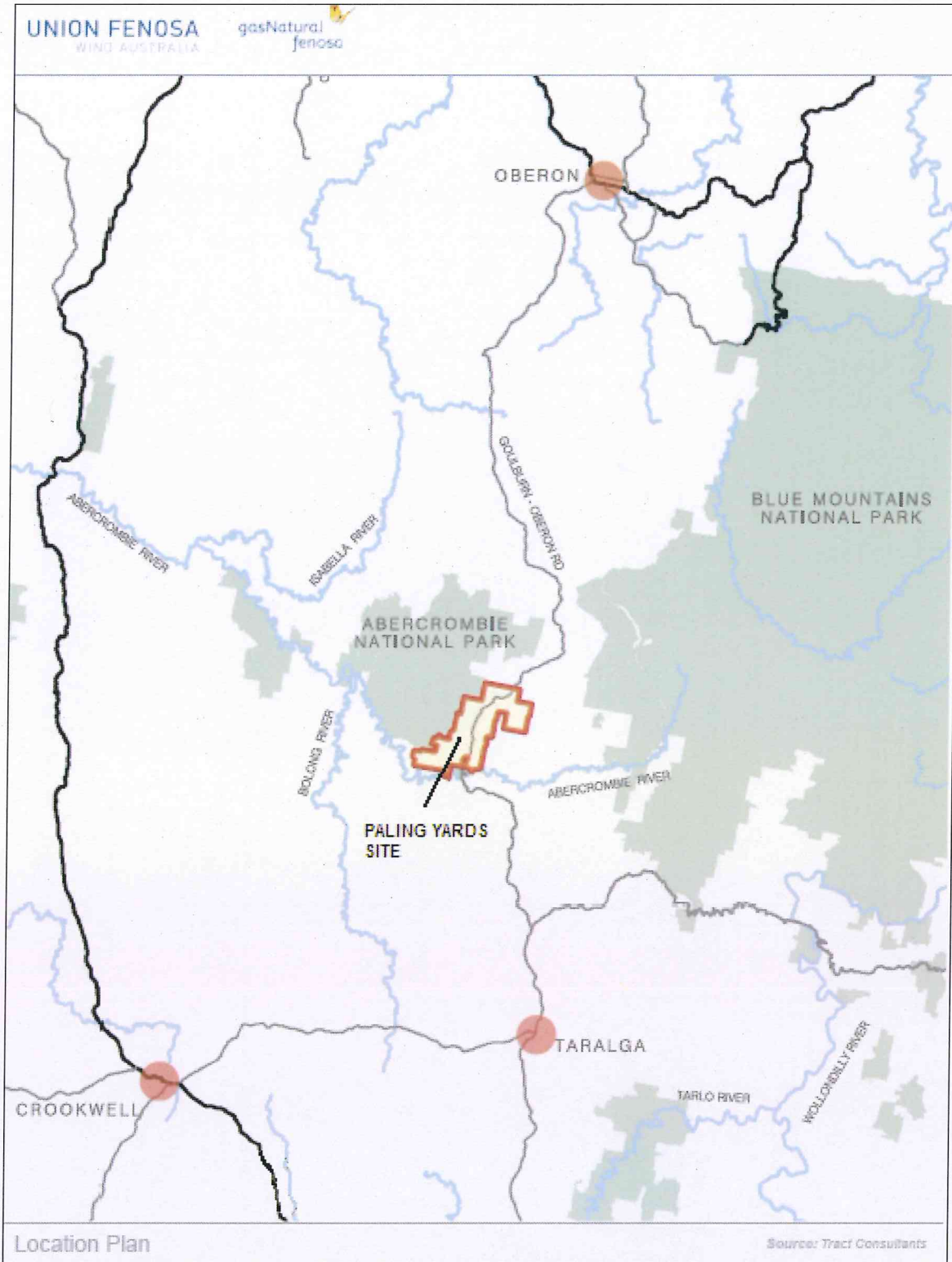
Shaq Mohajerani
Union Fenosa Wind Australia
Suite 4.03, 68 York Street
Sydney NSW 2000

Should you have any queries on this matter, please don't hesitate to contact me on 1800 457 181.

Regards,


Shaq Mohajerani
Project Development Manager

Location of proposed Paling Yards wind farm project



Date: Thursday 16th May 2013
Ref: 20130516-PYWF10

Mr Robert Clegg
Waradjuri Council of Elders
3 Loretta Place
Glendennings NSW 2761

Subject: Stakeholder Consultation for Aboriginal Cultural Heritage Assessment

Dear Mr Clegg,

Union Fenosa Wind Australia Pty Ltd (UFWA) is currently proposing a wind farm project called 'Paling Yards' (see enclosed regional map) that is located in the southern section of the Oberon Shire Council, immediately north of the shire boundary with the Upper Lachlan Shire Council. The proposed Paling Yards wind farm project is a transitional Part 3A Major Project under the Environmental Planning and Assessment Act 1979 (NSW), and will continue to be assessed and determined under Part 3A provisions of the Act.

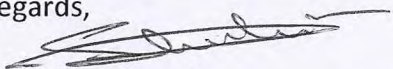
UFWA has commissioned Anderson Environmental Consultants Pty Ltd to undertake the investigation and assessment of indigenous archaeological heritage, in consultation with relevant stakeholders. The project site area falls within the boundaries of the Pejar Local Aboriginal Land Council (Pejar LALC) as defined on the mapped areas under the '*Aboriginal Land Rights Act (1983) – Aboriginal Land Councils*'. As part of the Project's consultation process, Pejar LALC has been involved in the consultation process.

The purpose of this notification letter is to ascertain if Waradjuri Council of Elders is interested in participation through the assessment and development of this proposed project and, if the proposed project is granted development approval, to participate in the process for preparation of the Aboriginal / Cultural Heritage Management Plan. In order to facilitate the stakeholder consultation process, we would appreciate your feedback to advise us if Waradjuri Council of Elders requests consultation for this project. Your feedback should be in writing to the address shown below, by no later than Friday 31st May 2013.

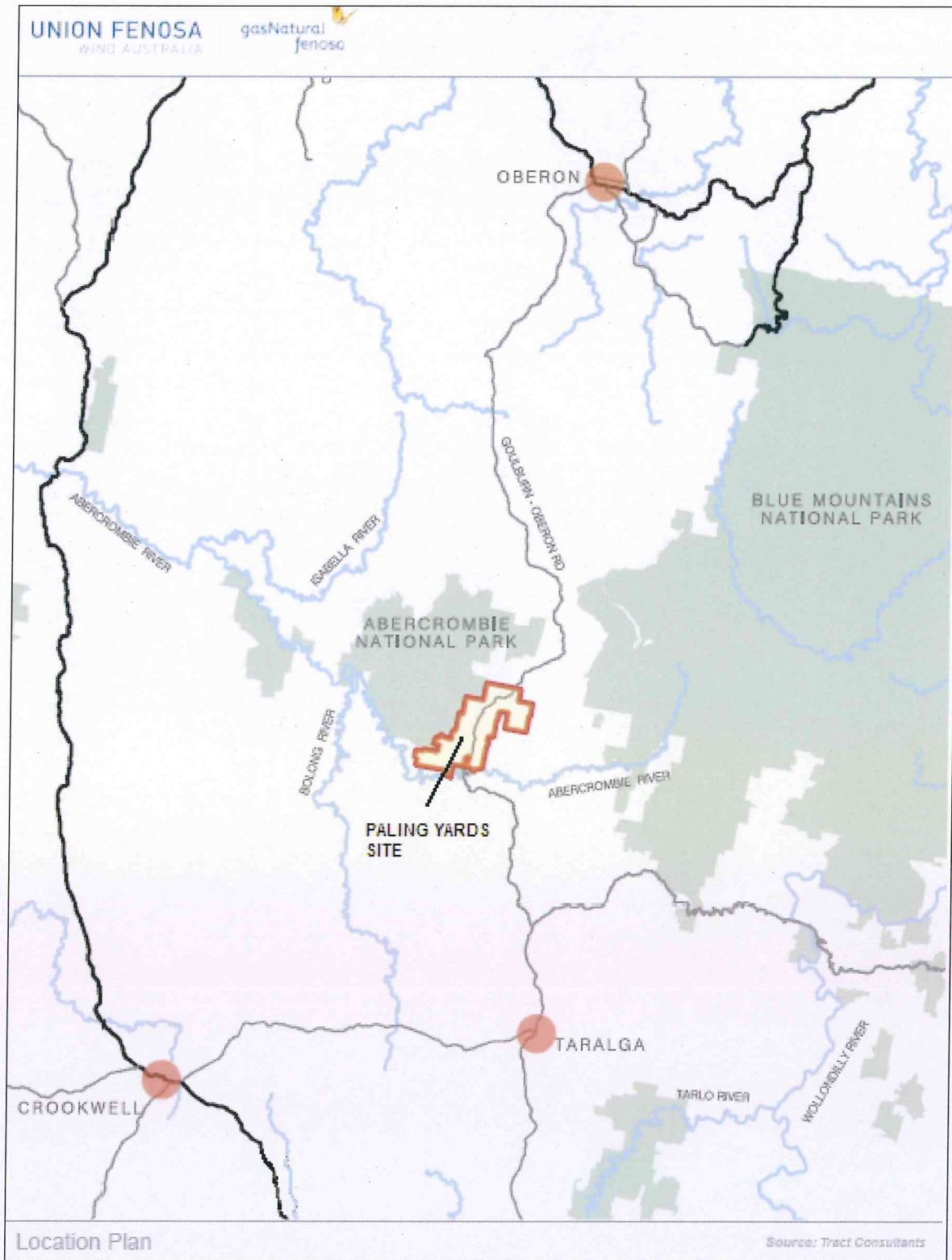
Shaq Mohajerani
Union Fenosa Wind Australia
Suite 4.03, 68 York Street
Sydney NSW 2000

Should you have any queries on this matter, please don't hesitate to contact me on 1800 457 181.

Regards,


Shaq Mohajerani
Project Development Manager

Location of proposed Paling Yards wind farm project



Date: Thursday 16th May 2013
Ref: 20130516-PYWF11

Wiradjuri Traditional Owners
Central West Aboriginal Corporation
14 Duramana Road
Eglington NSW 2795

Subject: Stakeholder Consultation for Aboriginal Cultural Heritage Assessment

Dear Chairperson,

Union Fenosa Wind Australia Pty Ltd (UFWA) is currently proposing a wind farm project called 'Paling Yards' (see enclosed regional map) that is located in the southern section of the Oberon Shire Council, immediately north of the shire boundary with the Upper Lachlan Shire Council. The proposed Paling Yards wind farm project is a transitional Part 3A Major Project under the Environmental Planning and Assessment Act 1979 (NSW), and will continue to be assessed and determined under Part 3A provisions of the Act.


UFWA has commissioned Anderson Environmental Consultants Pty Ltd to undertake the investigation and assessment of indigenous archaeological heritage, in consultation with relevant stakeholders. The project site area falls within the boundaries of the Pejar Local Aboriginal Land Council (Pejar LALC) as defined on the mapped areas under the '*Aboriginal Land Rights Act (1983) – Aboriginal Land Councils*'. As part of the Project's consultation process, Pejar LALC has been involved in the consultation process.

The purpose of this notification letter is to ascertain if Wiradjuri Traditional Owners Central West Aboriginal Corporation is interested in participation through the assessment and development of this proposed project and, if the proposed project is granted development approval, to participate in the process for preparation of the Aboriginal / Cultural Heritage Management Plan. In order to facilitate the stakeholder consultation process, we would appreciate your feedback to advise us if Wiradjuri Traditional Owners Central West Aboriginal Corporation requests consultation for this project. Your feedback should be in writing to the address shown below, by no later than Friday 31st May 2013.

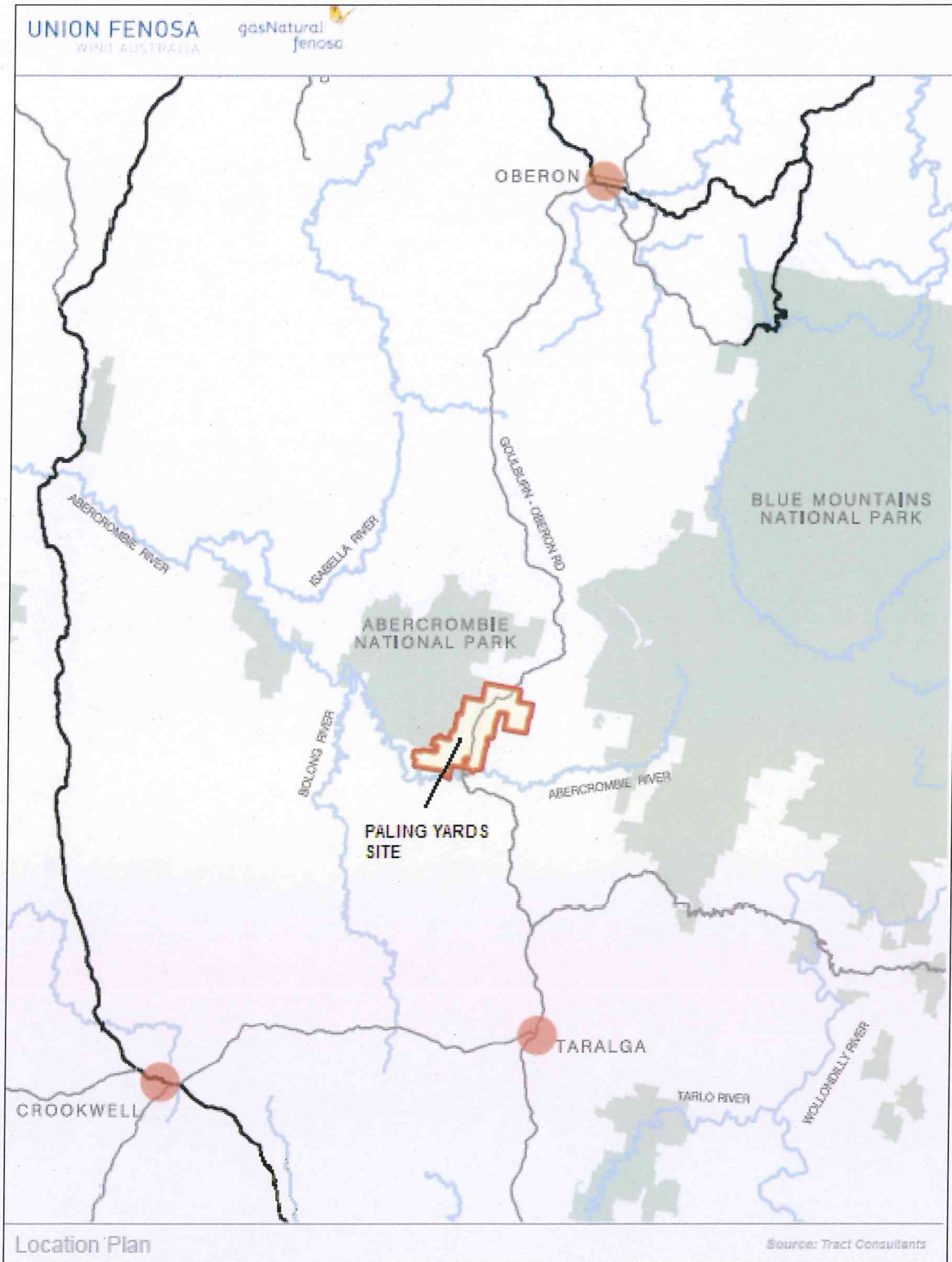
Shaq Mohajerani
Union Fenosa Wind Australia
Suite 4.03, 68 York Street
Sydney NSW 2000

Should you have any queries on this matter, please don't hesitate to contact me on 1800 457 181.

Regards,


Shaq Mohajerani
Project Development Manager

Location of proposed Paling Yards wind farm project



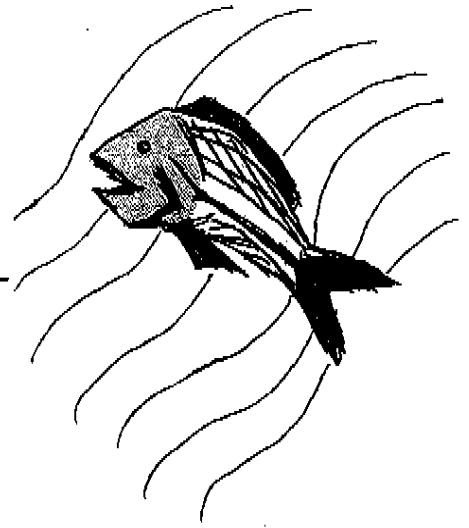
Annex E

Letter Correspondence
Providing Assessment
Methodology to Registered
Aboriginal Stakeholders

P

PEJAR LOCAL ABORIGINAL LAND COUNCIL

80 Combermere St (PO Box 289) Goulburn NSW 2580
Phone (02) 4822 3552 • Fax (02) 4822 3551
email address: pejar1@goulburn.net.au
ABN 72 662 632 151



Jason Anderson
Director
Anderson Environmental Consultants Pty Ltd
1300 302 507
Fax 028580 4731

Dear Jason

Proposed Wind farm Paling Yards.

The Pejar Local Aboriginal Land Council's representative Mr Luke Burgess attended a survey for the above proposal on 13 December 2010. The Purpose of this survey was to determine if any Aboriginal Heritage could be identified.

During the inspection a total of 8 Sites, involving 130 + Artefacts were located.

We agree fully with the recommendations, made by the Archaeologist Mr Jason Anderson, as stated below:

RECOMMENDATIONS

It is recommended that the detailed design of the Project aims to avoid, as far as practicable impacts on the known archaeological sites.

It is recommended that a Cultural Heritage Management Plan be prepared in collaboration with the Pejar Local Aboriginal Land Council to reduce and mitigate the impacts of the project on any artefacts which may be detected within disturbance zones. If it is not practicable to locate infrastructure so as avoid artefacts then co-operation with Pejar LALC should be undertaken to determine the management option for these artefacts (ie collection for education purposes or moving the artefacts slightly to outside the zone of disturbance). The movement of identified objects is considered to be likely to be a suitable mitigation measure in most cases as the distances involved would not be significant, and many of the objects may

have been moved in the past via water movement, erosion or vehicle/tractor movements such as road grading and cultivation of the ground.

The Cultural Heritage Management Plan should also outline management strategies for the management of any potential unrecorded sites which are identified within the site during construction of the Project. This is important as the detailed design of the proposed access tracks and electrical connections were not available at the time the field surveys were conducted, and potential deviations to the surveyed routes may be made during detailed design to reduce impact(s) on the land.

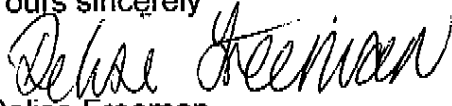
If impacts to any further sites which are identified cannot be avoided then further investigation would be required in consultation with Pejar LALC. This would include sub-surface digs and analysis.

Once the proposed access track extents and other disturbance areas are pegged on the ground, additional targeted surveys of these areas should be undertaken. Where these additional targeted surveys identify any further sites, test pits should be undertaken in order to determine the extent of significance of any sites which would be potentially impacted.

Careful road planning should be undertaken to utilise and upgrade existing roads where possible to achieve an overall site plan which minimises unnecessary soil disturbance.

If there is any further information that you may require, then please do not hesitate to contact us on the above numbers.

Yours sincerely



Delise Freeman
CEO

Shaq Mohajerani

From: Shaq Mohajerani [shaq.mohajerani@unionfenosa.com.au]
Sent: Thursday, 23 May 2013 2:55 PM
To: 'Lance Syme'
Cc: 'info@warrabinga.com.au'
Subject: RE: Paling Yards - DGRs and Current Assessment
Attachments: 20050621 - Paling Yards, Heritage Impact Assessment (final draft).pdf
Tracking:

Recipient	Read
'Lance Syme'	Read: 23/05/2013 3:04 PM
'info@warrabinga.com.au'	

Dear Lance,

As requested, please find attached the original (DRAFT) report from 2005, please note that this report has never been published for the public domain due to the contracts not being extended during that time. Unfortunately the company that performed the actual assessment is no longer operating (under the original name), I am of the impression that the experienced personnel from that company may be operating within a larger and different entity currently, but I have not been able to track them down since about 2010.

Please also note that OEH has also received and reviewed this DRAFT report as it was referenced in the current assessment.

Regards,
 Shaq Mohajerani
Project Development Manager
0400 403 282





Union Fenosa Wind Australia Pty Ltd
 Suite 403, 68 York Street
 Sydney NSW 2000
 Ph: +61 2 8297 8700
 Fax: +61 2 9279 2265
www.unionfenosa.com.au

This message is for the addressee only and may contain confidential or privileged information. If you receive this in error and you are not the intended recipient, please inform us immediately and delete it and all copies from your system. Any unauthorised disclosure, use or dissemination, either whole or partial, is prohibited. Any views expressed in this message are those of the author and are not necessarily endorsed by Union Fenosa Wind Australia Pty Ltd and the company cannot be held responsible for any misuse. This message is for information purpose only. This email and its attachments are believed to be free of any virus, or defects, but it is the responsibility of the recipient to ensure this. Union Fenosa Wind Australia Pty Ltd does not accept responsibility or liability for any loss or damage arising in any way from its receipt or use. Please consider the environment before printing this email.

From: Lance Syme [mailto:lance.syme@warrabinga.com.au]
Sent: Thursday, 23 May 2013 2:45 PM
To: 'Shaq Mohajerani'
Cc: info@warrabinga.com.au
Subject: RE: Paling Yards - DGRs and Current Assessment

Shaq,

I have received your email along with the DGR's and the draft report. Thanks for turning the request around so quickly.

I have looked very briefly at the report and notice a reference to work done in 2005. Is it possible to get a copy of this report also?

23/05/2013

I can be reached on either 02 46278622 or 0409966371.

Regards,

Lance Syme

From: Shaq Mohajerani [mailto:shaq.mohajerani@unionfenosa.com.au]
Sent: Thursday, 23 May 2013 11:49 AM
To: 'Lance Syme'
Cc: info@warrabinga.com.au
Subject: RE: Paling Yards - DGRs and Current Assessment

Dear Lance,

Thank you very much for your quick response to our letter.

As requested, please find attached the DGRs issued for the proposed Paling Yards wind farm, and the current assessment in final draft format, along with the site map (as part of Appendix A of the assessment report).

I would appreciate any comments or suggested amendments to the assessment report.

Please reply to this email so that I know you have received it, also can you please provide a contact number for your office.
I look forward to your feedback.

Regards,
Shaq Mohajerani
Project Development Manager
0400 403 282

UNION FENOSA
WIND AUSTRALIA



Union Fenosa Wind Australia Pty Ltd
Suite 403, 68 York Street
Sydney NSW 2000
Ph: +61 2 8297 8700
Fax: +61 2 9279 2265
www.unionfenosa.com.au

This message is for the addressee only and may contain confidential or privileged information. If you receive this in error and you are not the intended recipient, please inform us immediately and delete it and all copies from your system. Any unauthorised disclosure, use or dissemination, either whole or partial, is prohibited. Any views expressed in this message are those of the author and are not necessarily endorsed by Union Fenosa Wind Australia Pty Ltd and the company cannot be held responsible for any misuse. This message is for information purpose only. This email and its attachments are believed to be free of any virus, or defects, but it is the responsibility of the recipient to ensure this. Union Fenosa Wind Australia Pty Ltd does not accept responsibility or liability for any loss or damage arising in any way from its receipt or use. Please consider the environment before printing this email.

From: Lance Syme [mailto:lance.syme@warrabinga.com.au]
Sent: Wednesday, 22 May 2013 4:26 PM
To: shaq.mohajerani@unionfenosa.com.au
Cc: info@warrabinga.com.au
Subject: Paling Yards

Mr Mohajerani,

Warrabinga has received your correspondence in relation the an Aboriginal Cultural Heritage Assessment for the Paling Yards. I can confirm that the area is within the area that Warrabinga asserts to hold native title rights over.

23/05/2013

Could you please forwards copies of the Director General Requirements for the project and any previous assessment that have been undertaken to date.

Regards,

Lance Syme
Chairperson
Warrabinga Native Title Claimants Aboriginal Corporation

View my profile on [Linked in](#)®

Disclaimer: This e-mail message is only intended to be read by the named recipient. It may contain information which is confidential, proprietary or the subject of legal privilege. If you are not the intended recipient please notify the sender immediately and delete this e-mail. You may not retransmit, use, copy or disseminate any information contained in it. Legal privilege and confidentiality is not waived because you have read this e-mail.

ERM has over 100 offices
across the following
countries worldwide

Australia	Netherlands
Argentina	New Zealand
Belgium	Peru
Brazil	Poland
China	Portugal
France	Puerto Rico
Germany	Singapore
Hong Kong	Spain
Hungary	Sri Lanka
India	Sweden
Indonesia	Taiwan
Ireland	Thailand
Italy	UK
Japan	USA
Korea	Venezuela
Malaysia	Vietnam
Mexico	

Environmental Resources Management

Building C, 33 Saunders Street
Pyrmont NSW 2009
Locked Bag 24,
Broadway NSW 2007

T: 61 2 8584 8888
F: 61 2 8584 8800
www.erm.com

