

PROJECT NEWSLETTER – MARCH 2021

Crookwell Development Pty Ltd (**CDPL**) is the owner and the operator of Crookwell 2 Wind Farm and the proponent of the approved Crookwell 3 Wind Farm project. Both projects are situated in the Southern Tablelands of New South Wales (NSW), and located within the Upper Lachlan Shire Council Local Government Area.

Crookwell 3 project was approved by the NSW Department of Planning, Industry, and Environment (DPIE) and now is at the stage of finalizing its pre-construction approvals before moving to the construction in the near future.

The Crookwell 3 Wind Farm project is a State Significant Development located ~17km southeast of the Crookwell Township and ~25km north-west of Goulburn. The project initially had two separate land areas known as Crookwell 3 East (1,100 ha) accessed via Woodhouselee Road and Crookwell 3 South (400 ha) accessed via Crookwell Road. However, Crookwell 3 South is now out of the scope of this project. The Crookwell 3 Wind Farm sites are predominantly sheep and cattle grazing farms that have a good wind resource and have access to the high voltage transmission line network via the approved Crookwell 2 Wind Farm substation in close proximity of the sites.

In February 2015 the NSW Department of Planning and Environment prepared an Environmental Assessment Report on the proposed Crookwell 3 Wind Farm project, the report made a recommendation to the Planning Assessment Commission that the project be approved. Since the time of the initial project proposal, there has been significant advancement in wind turbine technology that has led to a reduction in the cost of energy for the project. CDPL is now proposing to modify the design of the Crookwell 3 Wind Farm to utilise the newer wind turbine technology. The proposed changes to the Crookwell 3 Wind Farm project include:

- Reduction of 13 wind turbines, reducing the number of wind turbines proposed in Crookwell 3 East from 21 to 16 and de-scoping Crookwell 3 South from the project, resulting a reduction of wind turbines from originally proposed 29 to 16;
- Increasing the maximum turbine envelope so as to accommodate the newer more efficient wind turbine technology now available in the market. The changes proposed to the wind turbine envelope will:
 - Decrease in the hub height from 105m to up to 95m;
 - Increase in the blade size from 51m to up to 64m;
 - Increase in the rotor diameter from 104m to up to 130m;
 - Maintain the blade tip height at 157m (as assessed in Visual and Landscape Report publicly exhibited in 2012/2013);
 - Changes to obstacle night lighting design to match the reduced turbine layout;
 - Subdivision of any deemed subdivision arising from the grant of leases for the wind farm.

The Indicative Site Infrastructure and Turbine Layout Map for the combined Crookwell 2 and 3 Wind Farm projects is included in this newsletter.

The proposed modifications will enable the Crookwell 3 Wind Farm project to utilise the newer wind turbine technology currently available in the market whilst further reducing the overall environmental impacts of the project. The use of newer turbine models will allow the Crookwell 3 Wind Farm to generate more energy per wind turbine and to increase the overall energy yield of the amended project, the newer technology can generate up to 220 gigawatt hours per year (GWh/y) for the 16 larger wind turbines in comparison to only 208 GWh/y for the 29 original wind turbines. The amended Crookwell 3 Wind Farm project can provide enough electricity to power up more than 34,000 average size households per year.

As part of the process for this proposed modification, CDPL and its representatives and consultants, have carried out a comprehensive consultation process with various project stakeholders, including a door-knock consultation process during December 2015, and further community consultation early in 2016.

The Development Consent for the modified scope is available for the public on NSW Department of Planning, Industry, and Environment [website](#).

Economic Benefits of Crookwell 3 Wind Farm

The Capital Investment Value of the project is estimated to be ~\$120 Million, and is expected to provide around 40 direct jobs during construction and 6 ongoing operational jobs for the life of the wind farm.

The construction and operation phases of the project will stimulate the economy in the Upper Lachlan Shire as a result of direct investment and job creation, and higher disposable income and expenditure in the region.

These economic benefits are enhanced by CDPL's commitment to contribute an annual contribution of \$2,500 (adjusted annually to changes in the CPI) per operating turbine to the Upper Lachlan Shire's Community Enhancement Fund to be spent on community projects in vicinity of the project area. This equates to an annual contribution of ~\$40,000 per annum to the direct benefit of community projects in the local area. In addition as part of our proposal for voluntary Neighbour Benefit Sharing Agreements a number of Neighbour Deeds have been signed by several of the immediate neighbours of the project site boundary. These project neighbours will receive a direct benefit when the project is constructed and starts its operation phase.

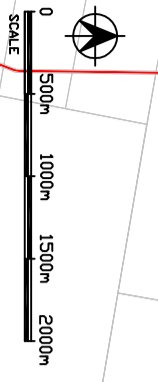
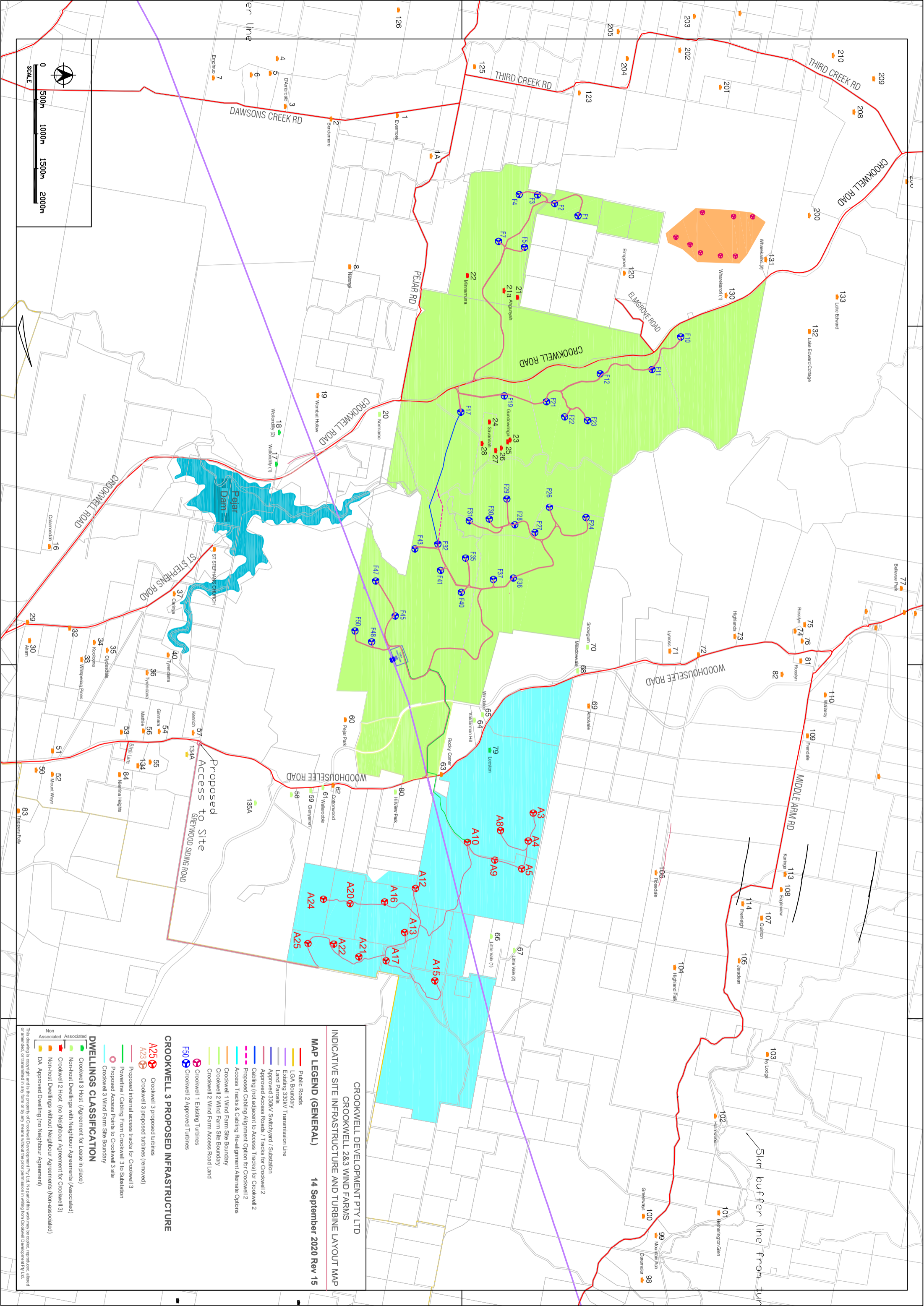
If you are interested in working on the wind farm projects then we recommend that you contact the New South Wales Government-supported

Industry Capability Network (ICN). We are cooperating with the ICN to assist local providers to maximise the local economic benefit of major projects in the Crookwell district.

Contact Us

If you would like to know more about the Crookwell 2 and 3 Wind Farm projects, there are a number of ways for you to contact us at Global Power Generation Australia Pty Ltd:

- You can speak with us by telephone on our free-call number **1800 457 181**
- You can email us at: info@globalpower-generation.com.au
- You can visit our website: <http://www.globalpower-generation.com.au> and use an online enquiry form to contact us.
- You can write to us via mail at:
**Suite 4 Level 3, 24 Marcus Clarke Street
Canberra, ACT 2600**
- Community Consultative Committee (CCC) for Crookwell 3 is the same Committee for Crookwell 2 that conducts meetings facilitated by an independent Chair appointed by the Department of Planning and Environment. The general purpose of CCC is to develop productive working relationships and facilitate communication between developers, council, the community and other stakeholders.
- Recent CCC meeting for Crookwell 2 and 3 was held on 24 March 2021.
- The Independent Chair of the CCC, Peter Gordon can be contacted on: peter.gordon@charterpoint.com.au
- Our representatives can also be available for face-to-face meetings with community members during their regular site visits.



**CROOKWELL DEVELOPMENT PTY LTD
CROOKWELL 2&3 WIND FARMS
INDICATIVE SITE INFRASTRUCTURE AND TURBINE LAYOUT MAP**

MAP LEGEND (GENERAL) 14 September 2020 Rev 15

- Public Roads
- LGA Boundary
- Existing 330kV Transmission Line
- Land Parcels
- Approved 330kV Switchyard / Substation
- Approved Access Roads / Tracks for Crookwell 2
- Cabling (not adjacent to Access Tracks) for Crookwell 2
- Proposed Cabling Alignment Option for Crookwell 2
- Access Tracks & Cabling Re-alignment Alternate Options
- Crookwell 1 Wind Farm Site Boundary
- Crookwell 2 Wind Farm Site Boundary
- Crookwell 2 Wind Farm Access Road Land
- Crookwell 1 Existing Turbines
- F50 Crookwell 2 Approved Turbines

CROOKWELL 3 PROPOSED INFRASTRUCTURE

- A25 Crookwell 3 proposed turbines
- A23 Crookwell 3 proposed turbines (removed)
- Proposed internal access tracks for Crookwell 3
- Powerlines / Cabling From Crookwell 3 to Substation
- Proposed Access Points to Crookwell 3 site
- Crookwell 3 Wind Farm Site Boundary

DWELLINGS CLASSIFICATION

- Crookwell 3 Host (Agreement for Lease in place)
- Associated
- Non-host Dwellings with Neighbour Agreements (Associated)
- Crookwell 2 Host (no Neighbour Agreement for Crookwell 3)
- Non-host Dwellings without Neighbour Agreements (Non-associated)
- DA Approved Dwelling (no Neighbour Agreement)

This drawing is copyright and is the property of Crookwell Development Pty Ltd. No part of this work may be copied, reproduced, altered or amended, or transmitted in any form or by any means without the prior permission in writing from Crookwell Development Pty Ltd.